

## HyperCube Z Axis Limit Switch - 8 & 10 mm Mount



Plexi

[VIEW IN BROWSER](#)

updated 12. 4. 2022 | published 14. 2. 2022

### Summary

I upgraded my HyperCube Z axis to 10 mm bearing rods and decided to add a Z Axis limit switch. The stock mount is for...

[3D Printers](#) > [3D Printers - Upgrades](#)

Tags: [hypercube](#) [corexy](#) [zlimitswitch](#) [switchmount](#)

I upgraded my HyperCube Z axis to 10 mm bearing rods and decided to add a Z Axis limit switch. The stock mount is for the 8 mm bearing rods and requires that the mount slide over the bearing rod. This mount can be attached after the rods are in place. I made the 10 mm mount for my HyperCube and I have posted a version with an 8 mm hole for those that would like to use this mount on their 8 mm Z axis setups.

I added the Z axis adjustable end stop for convenience. There are no changes to this part which came from Tech2C's HyperCube design

Printed in ABS at 230C

Category: 3D Printer Parts

## Model files



z\_axis\_limit\_sw\_bracket\_8mm.stl

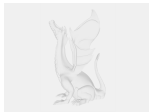


z\_endstop\_adjust\_v11.stl



z\_axis\_limit\_sw\_bracket\_10mm.stl

## Other files



sources.txt

[Find source .stl files on Thingiverse.com](#)

## License

This work is licensed under a  
[Creative Commons \(4.0 International License\)](#)



### Attribution

- ✗ | Sharing without ATTRIBUTION
- ✓ | Remix Culture allowed
- ✓ | Commercial Use
- ✓ | Free Cultural Works
- ✓ | Meets Open Definition

