

Shower Curtain Mount

 proxy-hatch

[VIEW IN BROWSER](#)

updated 14. 2. 2022 | published 14. 2. 2022

Summary

Made for showers with half-glass design. See blog post in description for details

[Household](#) > [Bathroom](#)

Tags: [mount](#) [bracket](#) [rod](#) [shower](#) [curtain](#)

Print with at least 30% infill for structure, and avoid PLA for moisture in the steamy hot shower

See my blog post for details <https://www.cyberhome2077.com/post/fixing-water-splash-from-half-glass-shower>

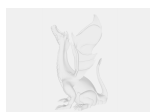
Model files



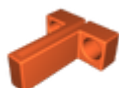
curtain-rod-mount-both.stl



curtain-rod-mount-single-rod.stl



curtain-rod-mount.f3d



curtain-rod-mount-dual-rod.stl

License ©



This work is licensed under a
[Creative Commons \(4.0 International License\)](https://creativecommons.org/licenses/by-nc/4.0/)

Attribution-NonCommercial

- ✗ | Sharing without ATTRIBUTION
- ✓ | Remix Culture allowed
- ✗ | Commercial Use
- ✗ | Free Cultural Works
- ✗ | Meets Open Definition