

2020 DrawBot w/ Installation & Use Instructions



Plexi

[VIEW IN BROWSER](#)

updated 12. 4. 2022 | published 14. 2. 2022

Summary

I posted this as remix because "makes" don't allow you to add files. I created an installation and use manual which is...

[Art & Design](#) > [Other Art & Designs](#)

Tags: [robot](#) [arduino](#) [drawingmachine](#) [axidraw](#) [cncshield](#)

I posted this as remix because "makes" don't allow you to add files. I created an installation and use manual which is helpful for using this DrawBot. It explains how to install the Inkscape software and extension and how to use the Universal G-Code Sender. See the attached file. I also created mounting points for the 24" wire tie that I used to support the cable that runs over to the carriage.

This is the original Thing by wsolstice69 <https://www.thingiverse.com/thing:2374238>

My cable support mount point <https://www.thingiverse.com/thing:2829025>

This design makes a great drawing robot. It is inexpensive to build, easy to assemble, and is very accurate. Although I haven't done so, it should also be easy to add a laser cutter to this machine.

Category: Art Tools

Model files

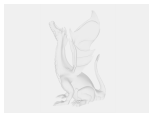


nylonstrapanchorv1.stl

Other files



2020_drawbotinstallusev3.pdf



drawbotassemblyuserguidev3.pdf

[Find source .stl files on Thingiverse.com](#)

License ©

This work is licensed under a
Creative Commons (4.0 International License)



Attribution

-
- ✗ | Sharing without ATTRIBUTION
 - ✓ | Remix Culture allowed
 - ✓ | Commercial Use
 - ✓ | Free Cultural Works
 - ✓ | Meets Open Definition