



Ignition Wire Harness for NAPA Part# ECH KS6533



GeekToybox

[VIEW IN BROWSER](#)

updated 15. 2. 2022 | published 15. 2. 2022

Summary

My friend's 1965 Buick Riviera needed a wire harness and NAPA doesn't make one that fits their own part so I got to work

[Hobby & Makers](#) > [Automotive](#)

Tags: [ignition](#) [1965](#) [buick](#) [ignitionkey](#) [wireharness](#)

Plastic parts just don't last in 56 year old vehicles. Go figure!

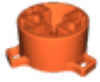
I took my calipers to an ignition switch and the metal connectors that fit it to design a brand new, custom wire harness that works in a 1965 Buick Riviera. I suspect it will work with other Buicks (among others) of the era.

Compatible with NAPA Part # [ECH KS6533](#)

Terminate 16-14 AWG wires with these terminals: [02962447-L](#) - Delphi 56 Series Female Terminal

Use at your own risk. I'd recommend some sort of fire retardant material such as [FR-ABS](#), but what do I know?

Model files



ignition-switch-wire-harness-napa-ech-ks6533-use-at... .stl

☐ Use at your own risk.

License ©



This work is licensed under a
Creative Commons (4.0 International License)

Attribution-NonCommercial

-
- ✗ | Sharing without ATTRIBUTION
 - ✓ | Remix Culture allowed
 - ✗ | Commercial Use
 - ✗ | Free Cultural Works
 - ✗ | Meets Open Definition