

Original Version Plus Lip

 **kelvinite**

[VIEW IN BROWSER](#)

updated 15. 2. 2022 | published 15. 2. 2022

Summary

I added a lip around the motor frame of the original version so the motor bottoms out against the lip when installed.



0.69 hrs



1 pcs



0.15 mm



0.40 mm



PLA



5 g



Prusa
MK3/S/S+

[3D Printers](#) > [3D Printers - Upgrades](#)

Use the same print instructions as the original version.

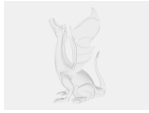
This remix is based on



MK3 X-motor cable protection

by argoroots

Model files



x-motor-cable-protection_v2.step

Print files

x-motor-cable-protection_v2_015mm_pla_mk3s_42m.gcode



PLA 0.40 mm 0.15 mm 0.69 hrs 5 g Prusa MK3/S/S+

License ©

This work is licensed under a
[Creative Commons \(4.0 International License\)](#)



Attribution

-
- ✗ | Sharing without ATTRIBUTION
 - ✓ | Remix Culture allowed
 - ✓ | Commercial Use
 - ✓ | Free Cultural Works
 - ✓ | Meets Open Definition