

Ender 3 Filament Roller Guide with Runout Switch



Farnsworth

[VIEW IN BROWSER](#)

updated 12. 4. 2022 | published 15. 2. 2022

Summary

This is a remix of <https://www.thingiverse.com/thing:3052488> I had this guide in use on my printer. After buying a BL-...

[3D Printers](#) > [3D Printers - Upgrades](#)

Tags: [filamentguide](#) [ender3](#) [runoutsensor](#)

This is a remix of

<https://www.thingiverse.com/thing:3052488>

I had this guide in use on my printer.

After buying a BL-Touch, I had a spare end-switch, so I remixed this filament guide to hold the spare switch.

Additional material:

2x M3 nuts Creality z-axis end-switch.

Print Settings

Printer Brand:

Creality

Printer:

Ender 3 Pro

Rafts:

No

Supports:

Yes

Resolution:

0.20

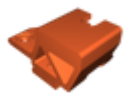
Infill:

20%

Filament: AIO Robotics PLA Orange

Category: 3D Printer Parts

Model files



part_2_v1.stl



part_1_v1.stl

[Find source .stl files on Thingiverse.com](#)

License

This work is licensed under a
[Creative Commons \(4.0 International License\)](#)



Attribution-NonCommercial

- ✗ | Sharing without ATTRIBUTION
- ✓ | Remix Culture allowed
- ✗ | Commercial Use
- ✗ | Free Cultural Works
- ✗ | Meets Open Definition