

MacroKeyboard (another one)



ManelTo

[VIEW IN BROWSER](#)

updated 15. 2. 2022 | published 15. 2. 2022

Summary

Printing at 0.2 layer.

[Gadgets](#) > [Computers](#)

Tags: [keyboard](#) [macro](#) [teclado](#) [teclas](#) [macrokey](#) [macros](#)

If you want to secure the box, you can use an threaded Inset M2 insert. But, due to the tightness of the elements, it is not really necessary.

Si desea asegurar la caja, puede usar un insertos de rosca tamaño M2. Pero, debido a la estanqueidad de los elementos, no es realmente necesario.

The electronic/electrónica:

1 Adafruit QTPy RP2040 (<https://learn.adafruit.com/adafruit-qt-py-2040>)

or Adafruit QTPy (<https://learn.adafruit.com/adafruit-qt-py>)

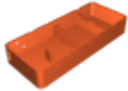
2 Adafruit Neokey 1x4 QT I2C (<https://learn.adafruit.com/neokey-1x4-qt-i2c>)

3 STEMMA QT / Qwiic JST SH 4-Pin Cable - 50mm Long (<https://www.adafruit.com/product/4399>)

1 Monochromes 0.96" 128x64 OLED Display - STEMMA QT (<https://www.adafruit.com/product/326>)

Optional: one M2 threaded insert and a M2 screw

Model files

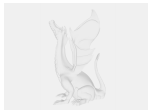


neokey2x4qt_qtpy_oled128x64-caja.stl



neokey2x4qt_qtpy_oled128x64-tapateclado.stl

Other files

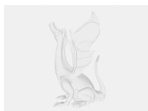


tecladoqtpy.ino



symbolmono24pt7b.ini

☐ change extension to h (ini ->h)



symbolmono18pt7b.ini

☐ change extension to h (ini ->h)

License ©

This work is licensed under a
Creative Commons (4.0 International License)



Attribution

- ✘ | Sharing without ATTRIBUTION
- ✓ | Remix Culture allowed
- ✓ | Commercial Use
- ✓ | Free Cultural Works
- ✓ | Meets Open Definition