

## End cap for Bernardo/Delta/... sliding table saw



VolkerMueller

[VIEW IN BROWSER](#)

updated 12. 4. 2022 | published 15. 2. 2022

## Summary

The end cap of the sliding table telescopic stop of my Bernardo FKS table saw broke, so I designed a new one. Fits...

[Hobby & Makers](#) > [Other Ideas](#)

Tags: [tablesaw](#) [telescopic](#)

The end cap of the sliding table telescopic stop of my Bernardo FKS table saw broke, so I designed a new one. Fits just like the old and uses the same screw in the same location, of course.

Die Verschlusskappe des Teleskopanschlags meiner Bernardo FKS Formatsäge ist zerbröselt - also hier eine neue. Passt so gut, wie das Original und hält natürlich mit der alten Schraube am alten Ort.

## Print Settings

### Printer Brand:

Creality

### Printer:

Ender 3

**Rafts:**

No

**Supports:**

Yes

**Resolution:**

0,2 mm

**Infill:**

20%

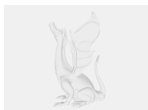
**Filament:** any PLA or PETG black

Category: Parts

## Model files



teleskopanschlag\_stopsel.stl



teleskopanschlag\_stopsel.stp

[Find source .stl files on Thingiverse.com](#)

## License ©

This work is licensed under a  
**Creative Commons (4.0 International License)**



**Attribution—Noncommercial—Share Alike**

- 
- ✗ | Sharing without ATTRIBUTION
  - ✓ | Remix Culture allowed

- ✕ | Commercial Use
- ✕ | Free Cultural Works
- ✕ | Meets Open Definition