



## Volkswagen Bus 1970s



[VIEW IN BROWSER](#)

updated 12. 4. 2022 | published 29. 12. 2019

### Summary

Watch here: <https://youtu.be/cv1QyHBbdzw> This is my take on a VW Bus model. It's not 100% accurate to any specific year.

[Hobby & Makers](#) > [Automotive](#)

Tags: [car](#) [model](#) [van](#) [bus](#) [volkswagen](#)

Watch here: <https://youtu.be/cv1QyHBbdzw>

This is my take on a VW Bus model. It's not 100% accurate to any specific year. I was just going for a 1970s-ish VW Bus, and it's missing a few details that would have made it significantly more difficult to print without adding too much to the overall feel of it (like the mirrors for example).

But this is something that I found to be very fun, and it turned out pretty good I think. I modeled it in Fusion 360. I used a Box in the sculpting environment to get the main shape. Then I used sketches to add all of the details to the body.

Then I printed it in a few pieces. The main body is all in one part, you'll need supports just for the window frames. Then the wheels print separately with a few pins that allow you to glue them in place easily.

Printers: Prusa i3 MK2S

Filament: Repko PLA

Layer Height: 0.1mm  
Supports: Yes  
Modeled in Fusion 360

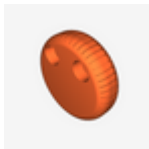
## Print instructions

Unassociated tags: Model Car, VW Bus  
Category: Automotive

## Model files



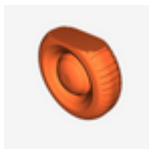
**top.stl**



**wheel\_4.stl**



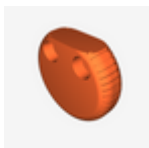
**full\_bus.stl**



**wheel\_2.stl**



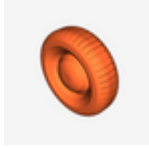
**pin.stl**



**wheel\_1.stl**



**body.stl**



**wheel\_3.stl**

[Find source .stl files on Thingiverse.com](#)

## License ©

This work is licensed under a  
**Creative Commons (4.0 International License)**



### Attribution

---

- ✗ | Sharing without ATTRIBUTION
- ✓ | Remix Culture allowed
- ✓ | Commercial Use
- ✓ | Free Cultural Works
- ✓ | Meets Open Definition