

Card Edge Connector 8 Pin (like amphenol brand)



Midna Rinku

[VIEW IN BROWSER](#)

updated 15. 2. 2022 | published 15. 2. 2022

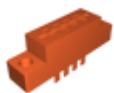
Summary

I needed this for a project. STEP files included.

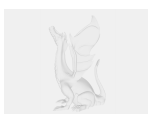
[Hobby & Makers](#) > [Electronics](#)

Tags: [connector](#) [edgeconnector](#) [amphenol](#)

Model files



[card-edge-connector-8-pin-v2.stl](#)



[card-edge-connector-8-pin-v2.step](#)

License

This work is licensed under a
GNU



General Public License v2.0

- ✗ | Sharing without ATTRIBUTION
- ✓ | Remix Culture allowed
- ✓ | Commercial Use
- ✓ | Meets Open Definition
- i | Share under the same license