



Mega Man! Each Color is a Separate STL!



[VIEW IN BROWSER](#)

updated 12. 4. 2022 | published 5. 12. 2019

Summary

Watch the Video here: <https://youtu.be/Wf-8becReDs> This is a quick Mega Man model I created in ZBrush as a final...

[Toys & Games](#) > [Action Figures & Statues](#)

Tags: [retro](#) [big](#) [megaman](#)

Watch the Video here: <https://youtu.be/Wf-8becReDs>

This is a quick Mega Man model I created in ZBrush as a final project to print on the 3D Printing Nerd's traveling gMax before we had to send it on.

The files for this are a little rough so sorry for that. I'll probably revisit this to clean them up a bit. They're definitely printable and go together, they're just not the easiest to print and require supports.

Here's a list of filaments we used if you want to match the colors:

Dark Blue - Fillamentum Nobel Blue

<https://fillamentum.com/collections/pla-extrafill/products/pla-extrafill-noble-blue>

Light Blue - AMZ3D Light Blue

<https://www.amazon.com/gp/product/B01CX8ZFJC/>

ref=s9_dcacsd_dcoop_bw_cr_x_a_w

Skin - AMZ3D Sakura Pink

<https://www.amazon.com/1-75mm-Sakura-Pink-Printer-Filament/dp/B01LWMJPNF>

Red - Fillamentum Signal Red

<https://fillamentum.com/collections/pla-extrafill/products/fillamentum-pla-extrafill-signal-red>

White - AMZ3D White

https://www.amazon.com/gp/product/B01D99PTA4/ref=s9_acsd_hps_bw_cr_x_a_w

Black - Fillamentum Traffic Black

<https://fillamentum.com/collections/pla-extrafill/products/fillamentum-pla-extrafill-traffic-black>

Print instructions

Unassociated tags: Mega Man, Super smash Bros, Video Game

Category: Video Games

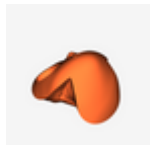
Model files



helmet_small_fin-light_blue.stl



leg_left-light_blue.stl



face-skin.stl



ear-red-x2.stl



eyes-white.stl



arm_blaster-dark_blue.stl



torso-light_blue.stl



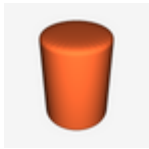
ear-light_blue-x2.stl



eyes-black.stl



leg_right-light_blue.stl



blast-red.stl



arm_hand-dark_blue.stl



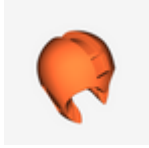
underpants.stl



leg_right-dark_blue.stl



helmet_large_fin-light_blue.stl



helmet-dark_blue.stl



leg_left-dark_blue.stl

[Find source .stl files on Thingiverse.com](#)

License ©

This work is licensed under a
[Creative Commons \(4.0 International License\)](#)



Attribution

-
- ✗ | Sharing without ATTRIBUTION
 - ✓ | Remix Culture allowed
 - ✓ | Commercial Use
 - ✓ | Free Cultural Works
 - ✓ | Meets Open Definition