



## Valve Index VR Desk Dock



LayerCake

[VIEW IN BROWSER](#)

updated 6. 2. 2024 | published 31. 12. 2022

### Summary

Convenient desk dock to quickly connect your Valve Index.



4.89 hrs



1 pcs



0.20 mm



0.40 mm



PLA



46 g



Prusa  
MK3/S/S+

[Gadgets](#) > [Virtual Reality](#)

Tags: [dock](#) [valveindex](#)

### Important

Please try the cables before printing. Display Port can be finicky and an extension cable might not work for your setup. For me only a very short cable of 2 meters worked.

### Required Hardware

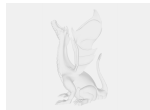
- 4 wood screws 3.5x16 for mounting on the desk (don't drill through your desk)
- 3 screws M3x8 tap directly into plastic to assemble
- Club 3D DisplayPort-Cabel 1.4 2m (5m did not work for me) [[DE](#)] [[US](#)]
- Amazon Basics USB 3.0 extension 1.8m [[DE](#)] [[US](#)]

## Notes

Made with the personal version of Autodesk Fusion 360 therefore non commercial only.

Source file included.

## Model files



**vr-desk-dock-valve-index-club-3d.f3d**

☐ Autodesk Fusion 360 source file.



**vr-desk-dock-valve-index-club-3d.3mf**

## Print files



**vr-desk-dock-valve-index-club-3d\_02mm\_pla\_mk3s\_.gcode**

⚙️ PLA ⚙️ 0.40 mm ⚙️ 0.20 mm ⌚ 4.89 hrs ⚖️ 46 g 🖨️ Prusa MK3/S/S+

## License ©

This work is licensed under a  
[Creative Commons \(4.0 International License\)](#)



**Attribution-NonCommercial**

- ✗ | Sharing without ATTRIBUTION
- ✓ | Remix Culture allowed
- ✗ | Commercial Use
- ✗ | Free Cultural Works
- ✗ | Meets Open Definition

