

3D MODEL ONLY



Empty Filament Spool - Microcenter Inland PLA



Books

[VIEW IN BROWSER](#)

updated 28. 2. 2023 | published 28. 2. 2023

Summary

A model of an empty Inland PLA filament spool.

[Hobby & Makers](#) > [Tools](#)

Tags: [reuse](#) [spool](#) [filament](#) [filamentspool](#)
[filamentspoolreuse](#) [reusespool](#)

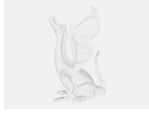
A model of an empty Inland PLA filament spool from Microcenter.

Model not intended for printing, mostly for exploring the re-use possibilities with a filament spool of these dimensions.

Model files



[filament-spool-inland-pla.stl](#)



filament-spool-inland-pla.fcstd

FreeCAD 0.20

License ©

This work is licensed under a
Creative Commons (International License)



Public Domain

- ✓ | Sharing without ATTRIBUTION
- ✓ | Remix Culture allowed
- ✓ | Commercial Use
- ✓ | Free Cultural Works
- ✓ | Meets Open Definition