



## Fantasy short swords or daggers - low res to high res



Rab Beverly

[VIEW IN BROWSER](#)

updated 6. 12. 2019 | published 6. 12. 2019

### Summary

This is a set of fantasy short swords or daggers (depending on print size). They go from low res to high.



15.44 hrs



1 pcs



0.15 mm



0.40 mm



PLA



112 g



Prusa MK2/S

[Costumes & Accessories](#) > [Props](#)

Tags: [sword](#) [fantasy](#) [dagger](#)

This is a set of fantasy short swords or daggers (depending on print size). They go from low res to high. Fun to play with. Careful, they are somewhat sharp. If you're going to poke at people with them, I recommend modifying the tip and edges for safety.

You can print these tiny for figurines, or people-size for goblin hunting.

On an aesthetic note, and for any hobby bladesmiths out there, the blades have a compound distal taper. The thickness is more uniform at the base, with the edge tapering down while the spine tapers toward a thicker point near the tip. This results in a diamond shape toward the tip of the lower

resolution blades. On the highest detail sword, a spine is added from the base of the blade, reminiscent of the strengthening spines on bronze and early iron swords.

Please enjoy responsibly.

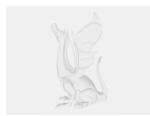
## Print instructions

To get larger sizes on a small print bed, it may help to rotate ~45 degrees on the x axis, then z axis, then center. You'll be able to print from the bottom corner to top z-axis corner that way, with supports.

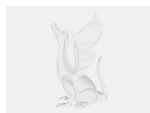
## Model files



**fantasy-blade-1-lowres.stl**



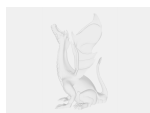
**fantasy-blade-1.blend**



**fantasy-blade-base-lowres.blend**



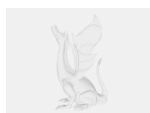
**fantasy-blade-1.stl**



**fantasy-blade-exaggerated-lowres.blend**



**fantasy-blade-exaggerated-lowres.stl**

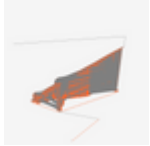


**fantasy-blade-1-supreme.blend**



**fantasy-blade-1-supreme.stl**

## Print files



**fantasy-blade-1-supreme\_015mm\_pla\_mk2s\_15h26m.gcode**

🌀 PLA 🌀 0.40 mm ≡ 0.15 mm ⌚ 15.44 hrs ⚖️ 112 g 🖨️ Prusa MK2/S

## License ©

This work is licensed under a  
[Creative Commons \(International License\)](#)



**Public Domain**

- 
- ✓ | Sharing without ATTRIBUTION
  - ✓ | Remix Culture allowed
  - ✓ | Commercial Use
  - ✓ | Free Cultural Works
  - ✓ | Meets Open Definition