



## Diamond Flower Vase (waterproof)



PrintOtter

[VIEW IN BROWSER](#)

updated 16. 2. 2022 | published 16. 2. 2022

### Summary

A nice geometric vase for (dry) flowers

[Household](#) > [Home Decor](#)

Tags: [vase](#) [geometric](#) [geometry](#) [vasemode](#) [flowervase](#)  
[waterproof](#)

The Vase was printed on a Geeetech A10M with the dual color extruder hence the color gradient.

[Here](#) is an article if you want to learn more about waterproofing a print.

After a bunch of trial and error the following settings worked for me to waterproof the vase:

- 8 bottom layers
- Slow print speed of 25mm/s
- Line width of .8mm
- Layer height of .3mm
- A .6mm nozzle

Since I did the prints with a Geeetech machine, I sliced the STL in Cura. The profile is also uploaded as a .txt (.curaprofile is not supported) if you want to recreate my settings in PrusaSlicer.

The height of the vases in the pictures is 22cm.

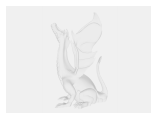
The material I used was PolyTerra PLA Arctic Teal, Candy and Renkforce PLA white.

## Model files



**diamond\_vase.stl**

## Other files



**8w\_3h\_25mmstrav\_70flowinner\_215c\_seam\_vasecuraprofi... .txt**

## License ©

This work is licensed under a  
[Creative Commons \(4.0 International License\)](#)



**Attribution—Noncommercial—Share Alike**

- 
- ✗ | Sharing without ATTRIBUTION
  - ✓ | Remix Culture allowed
  - ✗ | Commercial Use
  - ✗ | Free Cultural Works
  - ✗ | Meets Open Definition