



Puzzle earrings



PetriT

[VIEW IN BROWSER](#)

updated 16. 2. 2022 | published 16. 2. 2022

Summary

Puzzle earrings

[Fashion](#) > [Women](#)

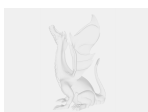
Tags: [puzzle](#) [earrings](#) [earring](#) [woman](#)

Puzzle earrings printed in PLA. Normal 100% size is 20mm x 20mm. I printed also in 60% size 12mm x 12mm which is really nice size.

Model files



[korvakoru_palapeli-body001fillet019.stl](#)



[korvakoru_palapeli.fcstd](#)

License ©

This work is licensed under a
Creative Commons (4.0 International License)



Attribution

- ✗ | Sharing without ATTRIBUTION
- ✓ | Remix Culture allowed
- ✓ | Commercial Use
- ✓ | Free Cultural Works
- ✓ | Meets Open Definition