



## Simple peg hanger



Pitel

[VIEW IN BROWSER](#)

updated 16. 2. 2022 | published 16. 2. 2022

## Summary

Dead simple hanger.

[Household](#) > [Home Decor](#)

Tags: [hanger](#)

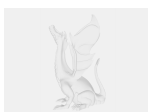
Just use double-sided tape to attach it. Best printed with large layers, so the calendar sheets doesn't fall off.

## Model files

**vesacek.stl**



**vesacek.scad**



# License ©

This work is licensed under a  
**Creative Commons (4.0 International License)**



## Attribution

---

- ✗ | Sharing without ATTRIBUTION
- ✓ | Remix Culture allowed
- ✓ | Commercial Use
- ✓ | Free Cultural Works
- ✓ | Meets Open Definition