

## Cable wall brackets



MrPorcine

[VIEW IN BROWSER](#)

updated 12. 4. 2022 | published 16. 2. 2022

### Summary

Four wall brackets for organizing your cables.



3.60 hrs



4 pcs



0.30 mm



0.40 mm



PLA



78 g



Prusa  
MK3/S/S+

[Household](#) > [Office](#)

Four wall brackets for organizing your cables.

### Print Settings

#### Printer Brand:

Prusa

#### Printer:

I3 MK3S

#### Rafts:

No

#### Supports:

No

**Resolution:**

0.3mm

**Infill:**

20%, but 6 perimeters

**Filament:** Generic PLA Any

**Notes:**

There are 4 brackets with different pitches for different size cables.

Name	Opening	Pitch	Length
5mm	5mm	10.2mm	240mm
6mm	6mm	12.1mm	245mm
8mm	8mm	14.9mm	200mm
12mm	12mm	23.9mm	245mm

Both .stl and .stp files included

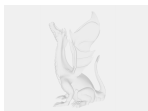
Category: Organization

## Model files

**cabl**bracket\_12mm.stl****



**cabl**bracket\_12mm.stp****



**cabl**bracket\_5mm.stp****



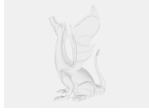
**cabl**bracket\_5mm.stl****





**cablebracket\_8mm.stp**

---



**cablebracket\_6mm.stp**

---



**cablebracket\_8mm.stl**

---



**cablebracket\_6mm.stl**

## Print files



**cablebracket\_8mm\_03mm\_pla\_mk3s\_2h47m.gcode**

🌀 PLA 🌀 0.40 mm ≡ 0.30 mm ⌚ 2.79 hrs ⚖️ 60 g 🖨️ Prusa MK3/S/S+

---



**cablebracket\_12mm\_03mm\_pla\_mk3s\_3h22m.gcode**

🌀 PLA 🌀 0.40 mm ≡ 0.30 mm ⌚ 3.36 hrs ⚖️ 73 g 🖨️ Prusa MK3/S/S+

---



**cablebracket\_6mm\_03mm\_pla\_mk3s\_3h36m.gcode**

🌀 PLA 🌀 0.40 mm ≡ 0.30 mm ⌚ 3.60 hrs ⚖️ 78 g 🖨️ Prusa MK3/S/S+

---



**cablebracket\_5mm\_03mm\_pla\_mk3s\_3h29m.gcode**

🌀 PLA 🌀 0.40 mm ≡ 0.30 mm ⌚ 3.49 hrs ⚖️ 78 g 🖨️ Prusa MK3/S/S+

# License ©

This work is licensed under a  
**Creative Commons (4.0 International License)**



## Attribution

---

- ✗ | Sharing without ATTRIBUTION
- ✓ | Remix Culture allowed
- ✓ | Commercial Use
- ✓ | Free Cultural Works
- ✓ | Meets Open Definition