

## Foldable Shovel



Michal Fanta



[VIEW IN BROWSER](#)

updated 9. 8. 2023 | published 9. 8. 2023

### Summary

Light foldable shovel. Ideal equipment for winter trips on foot, cross-country skiing, ski alps skiing or freeride.



32.64 hrs



7 pcs



0.20 mm



0.40 mm



PC



412 g



Prusa  
MK3/S/S+

[Hobby & Makers](#) > [Tools](#)

Tags: [tool](#) [shovel](#) [spade](#) [rescue](#) [foldable](#) [tools](#) [travel](#)  
[camping](#) [foldabledesign](#) [minishovel](#) [avalanche](#)



**Do you like my 3D models?  
Please, support me  
and join the club.**

**Thanks**

[Support me & Join Printables Club](#)

## Assembly

list of non-printed items for shovel

- 2 pcs - M5 screw 15mm with truss head
- 1 pcs - M5 screw 12mm with truss head
- 3 pcs - M5 nut with nylon insert
- 1 pcs - M8 50mm screw with internal hex head
- 1 pcs - M8 30mm screw with internal hex head
- 2 pcs - M8 nut with nylon insert
- 1 pcs - spring aprox. 30x8mm

## Printing

Printed with PC Blend and PC Blend Carbon Fibre filament.

## Model files



**shovel\_handle\_washer.3mf**



**shovel\_handle\_rod.3mf**



**shovel\_shovel.3mf**



**shovel\_grip.stl**

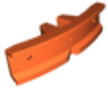


**shovel\_mounting\_bracket.3mf**



**shovel\_handle\_rod.stl**

---



**shovel\_mounting\_bracket.stl**

---



**shovel\_handle.3mf**

---



**shovel\_shovel.stl**

---



**shovel\_grip.3mf**

---



**shovel\_handle\_nut.3mf**

---



**shovel\_handle\_washer.stl**

---



**shovel\_handle\_nut.stl**

---



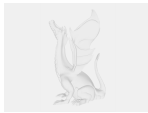
**shovel\_handle.stl**

---



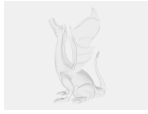
**shovel\_handle\_washer.step**

---



**shovel\_handle.step**

---



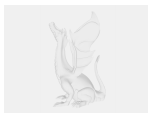
**shovel\_grip.step**

---



**shovel\_handle\_rod.step**

---



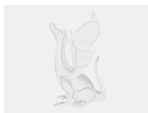
**shovel\_shovel.step**

---



**shovel\_mounting\_bracket.step**

---



**shovel\_handle\_nut.step**

## Print files



**shovel\_mounting\_bracket\_02mm\_pc\_mk3s\_2h59m.gcode**

PC 0.40 mm 0.20 mm 2.98 hrs 38 g Prusa MK3/S/S+

---



**shovel\_handle\_rod\_02mm\_pc\_mk3s\_2h24m.gcode**

PC 0.40 mm 0.20 mm 2.39 hrs 34 g Prusa MK3/S/S+

---



**shovel\_handle\_washer\_02mm\_pc\_carbon\_mk3s\_18m.gcode**

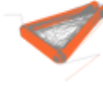
PC 0.40 mm 0.20 mm 0.31 hrs 5 g Prusa MK3/S/S+

---



### shovel\_shovel\_02mm\_pc\_carbon\_mk3s\_10h16m.gcode

PC 0.40 mm 0.20 mm 10.27 hrs 145 g Prusa MK3/S/S+



### shovel\_grip\_02mm\_pc\_carbon\_mk3s\_7h53m.gcode

PC 0.40 mm 0.20 mm 7.89 hrs 103 g Prusa MK3/S/S+



### shovel\_handle\_nut\_02mm\_pc\_carbon\_mk3s\_4h4m.gcode

PC 0.40 mm 0.20 mm 4.06 hrs 29 g Prusa MK3/S/S+



### shovel\_handle\_02mm\_pc\_carbon\_mk3s\_4h44m.gcode

PC 0.40 mm 0.20 mm 4.74 hrs 59 g Prusa MK3/S/S+

## License ©



This work is licensed under a  
**Creative Commons (4.0 International License)**

**Attribution-NonCommercial**

- ✗ | Sharing without ATTRIBUTION
- ✓ | Remix Culture allowed
- ✗ | Commercial Use
- ✗ | Free Cultural Works
- ✗ | Meets Open Definition