

Updated Ball bearing TPU Wheel Upgrade to the Prusa Spoolholder for Ikea Lack.

 joey

[VIEW IN BROWSER](#)

updated 12. 4. 2022 | published 29. 3. 2020

Summary

Simple Upgrade to the Spoolholder Prusa suggested for the Ikea Lack enclosure.

[3D Printers](#) > [3D Printers - Upgrades](#)

Tags: [spoolholder](#)

Simple Upgrade to the Spoolholder Prusa suggested for the Ikea Lack enclosure.

Just got annyed because of the vibration the original makes. SO i designed some TPU Wheels to fit on standard 608 Skateboard/Rollerblade Bearings. Print the Axis and the adaptor in PLA and you can enjoy an nice and easy running spool holder.

Print instructions

Unassociated tags: Ikea Lack enclosure, Prusa MK3

Category: 3D Printer Accessories Print Settings

Printer Brand: MK3

Printer: Prusa i3

Rafts: No

Supports: No

Resolution: 0.2

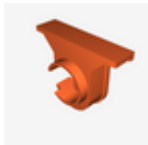
Infill: 10% Gyroid

Filament: Amazon Basics TPU/PLA white

Notes:

.

Model files



achsenadapter3.stl



achse.stl



wheel3.stl



achse2.stl

[Find source .stl files on Thingiverse.com](https://www.thingiverse.com)

License

This work is licensed under a
Creative Commons (4.0 International License)



Attribution-ShareAlike

- ✗ | Sharing without ATTRIBUTION
- ✓ | Remix Culture allowed
- ✓ | Commercial Use
- ✓ | Free Cultural Works
- ✓ | Meets Open Definition