

Pen Holder for Bed

 **Laura Haddock**

[VIEW IN BROWSER](#)

updated 16. 2. 2022 | published 16. 2. 2022

Summary

To keep a pen near you for midnight inspiration you just have to write down. Rescale it to fit your bed.

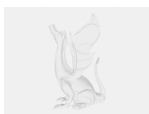
[Household](#) > [Bedroom](#)

I made this to keep a pen near me when inspiration strikes in the middle of the night. It's a bit bigger than my bed frame thingy, so I use some small rubber bands (e.g. Rainbow Loom bands) on each side to secure it.

0.3mm layer height works perfectly fine. Split down the middle to print more easily or use supports.

More pictures can be added if needed.

Model files



stiftehalter-bett-v1.f3d

License

This work is licensed under a
Creative Commons (4.0 International License)



Attribution—Noncommercial—Share Alike

- ✗ | Sharing without ATTRIBUTION
- ✓ | Remix Culture allowed
- ✗ | Commercial Use
- ✗ | Free Cultural Works
- ✗ | Meets Open Definition