



Table lamp

 **JurRZ**

[VIEW IN BROWSER](#)

updated 18. 2. 2022 | published 18. 2. 2022

Summary

Table lamp



18.91 hrs



5 pcs



0.20 mm



0.40 mm



PET



167 g



Prusa
MK3/S/S+

[Household](#) > [Home Decor](#)

Table lamp

Need:

- Lamp wire with plug and switch
- E14 lamp fitting
- Led lamp, E14, 4W or less
- 5 objects to print

Download

- Blender design files
- .stl files
- G-code files for MK3S printer

Assembly according the pictures 1 till 10

Model files



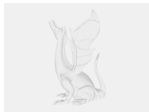
ledlamp-standaard.blend



ledlamp-fitting-houder1.blend



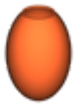
ledlamp-trekontlasting.blend



ledlamp-kap.blend



ledlamp-kap-standaard.blend



ledlamp-kap.stl



ledlamp-standaard.stl



ledlamp-kap-standaard.stl



ledlamp-fitting-houder1.stl



ledlamp-trekontlasting.stl

Print files



ledlamp-standaard_02mm_petg_mk3s_7h1m.gcode

⊗ PET 📏 0.40 mm ≡ 0.20 mm ⌚ 7.02 hrs ⚖️ 61 g 🖨️ Prusa MK3/S/S+



ledlamp-kap-standaard_02mm_petg_mk3s_2h0m.gcode

⊗ PET 📏 0.40 mm ≡ 0.20 mm ⌚ 2.00 hrs ⚖️ 21 g 🖨️ Prusa MK3/S/S+



ledlamp-fitting-houder1_02mm_petg_mk3s_27m.gcode

⊗ PET 📏 0.40 mm ≡ 0.20 mm ⌚ 0.45 hrs ⚖️ 4 g 🖨️ Prusa MK3/S/S+



ledlamp-trekontlasting_02mm_petg_mk3s_3m.gcode

⊗ PET 📏 0.40 mm ≡ 0.20 mm ⌚ 0.05 hrs ⚖️ 1 g 🖨️ Prusa MK3/S/S+



ledlamp-kap_02mm_petg_mk3s_9h23m.gcode

⊗ PET 📏 0.40 mm ≡ 0.20 mm ⌚ 9.39 hrs ⚖️ 80 g 🖨️ Prusa MK3/S/S+

License ©

This work is licensed under a
[Creative Commons \(4.0 International License\)](#)



Attribution-NonCommercial

- ✗ | Sharing without ATTRIBUTION
- ✓ | Remix Culture allowed
- ✗ | Commercial Use
- ✗ | Free Cultural Works
- ✗ | Meets Open Definition

