



## PSA, CGC, BGS, GSG, SGC and OneTouch Vertical Graded Card Stands



sellingson

[VIEW IN BROWSER](#)

updated 9. 10. 2023 | published 9. 10. 2023

### Summary

Printable stands for graded card slabs.

[Hobby & Makers](#) > [Other Ideas](#)

Tags: [thingiverse](#) [playingcards](#) [sgc](#) [cardstand](#) [gsg](#) [psa](#) [cgc](#) [beckett](#) [bgs](#) [graded](#) [onetouch](#) [slabs](#)

I really liked [Johnny\\_Lawrence's design](#) for a PSA stand, its minimal, quick printing, and looks nice but CGC slabs are a bit wider and I wanted a matching stand.

I modeled this in Fusion 360 using Johnny\_Lawrence's PSA stand as a reference for dimensions and style. Although it was an inspiration for PSA and CGC designs I recreated my own original model and included the ability to change the size for any slabs in the future. This allowed for the new Beckett and OneTouch stands and whatever else comes up in the future.

## Files

There are two versions of each stand, a standard version that is intended for use without a protection sleeve, and a \_Wide version that is intended for use with a protection sleeve on the slab. The standard version is tight fitting while the Wide version has a small amount of room front/back and an additional 1mm side to side for the bulky parts of ill-fitting protection sleeves.

## Fit and grading companies

- The PSA Stand also works for GSG (Gold Standard Grading)
- The OneTouch stand was created for the 35pt version and has smaller sides as to not cover the card.
- OneTouch Card Stand\_Thick.stl is for the thicker 10mm wide OneTouch

**Note:** This was designed to be tight fitting and **printed with PETG**. If you want to print these in PLA you'll want to scale up the model around 2% as an initial test then scale appropriately depending on how it fits. Or maybe try the wide version first.

## Print Settings

### Printer Brand:

Prusa

### Printer:

I3 MK3S

### Rafts:

Doesn't Matter

### Supports:

No

### Resolution:

0.20mm

### Infill:

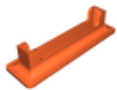
15% minimum

**Filament:** Prusament PETG Galaxy Black

## Notes:

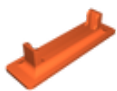
I've started printing these with .30mm resolution and its working out well.

## Model files



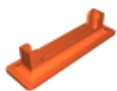
**bgs\_card\_stand.stl**

---



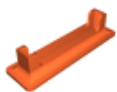
**shellz\_card\_stand.stl**

---



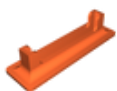
**cgc\_card\_stand.stl**

---



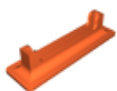
**bgs\_card\_stand\_wide.stl**

---



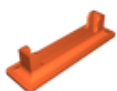
**psa\_card\_stand\_wide.stl**

---



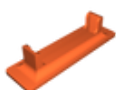
**psa\_card\_stand.stl**

---



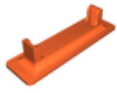
**cgc\_card\_stand\_wide.stl**

---



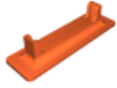
**onetouch\_card\_stand\_thick.stl**

---



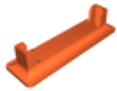
**shellz\_card\_stand\_wide.stl**

---



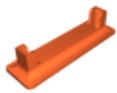
**onetouch\_card\_stand.stl**

---



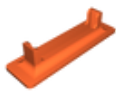
**sgc\_card\_stand\_wide.stl**

---



**sgc\_card\_stand.stl**

---



**onetouch\_card\_stand\_wide.stl**

## License ©



This work is licensed under a  
**Creative Commons (4.0 International License)**

**Attribution-NonCommercial**

---

- ✗ | Sharing without ATTRIBUTION
- ✓ | Remix Culture allowed
- ✗ | Commercial Use
- ✗ | Free Cultural Works
- ✗ | Meets Open Definition