



LEGO Vehicle Wall Hangers



jcolega

[VIEW IN BROWSER](#)

updated 8. 5. 2022 | published 19. 3. 2022

Summary

Hooks designed to hang LEGO vehicles by their wheels on the wall



0.90 hrs



10 pcs



0.20 mm



0.40 mm



PLA



8 g



Prusa
MK3/S/S+

[Toys & Games](#) > [Building Toys](#)

Tags: [lego](#) [technic](#) [legotechnic](#)

Quick solution to hang LEGO vehicles on your wall by their wheels. I've seen others hang their cars but not by the wheels so I made this. I have designed the following hooks (the numbers can be found on the tires of the vehicle you want to hang):

- 107 x 44
 - R: [Part 23798](#)
- 81.8 x 50
 - Straight Tread: [Part 32296](#)
 - Technic Racing w/ TECHNIC RACING: [Part 32296pb01](#)
 - Technic Racing w/ MICHELIN: [Part 32296pb02](#)
- 81.6 x 44
 - R: [Part 18450](#)

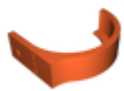
- ZR: [Part 23799](#)
- 81.6 x 36
 - R: [Part x1825](#)
- 75.1 x 28
 - Spiky Tread: [Part 69909](#)
- 68.8 x 36
 - H: [Part 41893](#)
 - ZR: [Part 44771](#)
- 56 x 28
 - ZR: [Part x490tire](#)
 - ZR Street: [Part 41897](#)
- 49.5 x 20
 - [Part 15413](#)
- 43.2 x 22
 - H: [Part 44308](#)
 - ZR: [Part 44309](#)
- 43.2 x 14
 - Solid: [Part 30699](#)
 - Offset Tread: [Part 56898](#)

Don't see the size you want here? Leave a comment and I can add it quickly! There's way too many sizes for me to make one for each without someone needing it but I'm more than happy to add one if someone wants it!

[Here's the OnShape document](#) if you'd like to copy it into your workspace and mess with it.

[Buy me a coffee :\)](#) - [Thangs](#) - [Thingiverse](#)

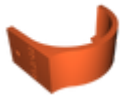
Model files



lego-car-wall-mount-432x14-left.stl



lego-car-wall-mount-432x14-right.stl



lego-car-wall-mount-432x22-left.stl



lego-car-wall-mount-432x22-right.stl



lego-car-wall-mount-495x20-left.stl



lego-car-wall-mount-495x20-right.stl



lego-car-wall-mount-56x28-left.stl



lego-car-wall-mount-56x28-right.stl



lego-car-wall-mount-688x36-left.stl



lego-car-wall-mount-688x36-right.stl



lego-car-wall-mount-751x28-left.stl



lego-car-wall-mount-751x28-right.stl



lego-car-wall-mount-816x36-left.stl



lego-car-wall-mount-816x36-right.stl



lego-car-wall-mount-816x44-left.stl



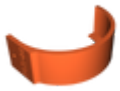
lego-car-wall-mount-816x44-right.stl



lego-car-wall-mount-818x50-left.stl



lego-car-wall-mount-818x50-right.stl



lego-car-wall-mount-107x44-left.stl



lego-car-wall-mount-107x44-right.stl

Print files



lego-car-wall-mount-751x28_02mm_pla_mk3s_2h54m.gcode

🌀 PLA 📏 0.40 mm ⚖️ 0.20 mm ⌚ 2.90 hrs ⚖️ 30 g 🖨️ Prusa MK3/S/S+



lego-car-wall-mount-816x36_02mm_pla_mk3s_3h44m.gcode

🌀 PLA 📏 0.40 mm ⚖️ 0.20 mm ⌚ 3.73 hrs ⚖️ 39 g 🖨️ Prusa MK3/S/S+



lego-car-wall-mount-688x36_02mm_pla_mk3s_3h17m.gcode

🌀 PLA 📏 0.40 mm ⚖️ 0.20 mm ⌚ 3.28 hrs ⚖️ 33 g 🖨️ Prusa MK3/S/S+



lego-car-wall-mount-432x14_02mm_pla_mk3s_54m.gcode

🌀 PLA 📏 0.40 mm ⚖️ 0.20 mm ⌚ 0.90 hrs ⚖️ 8 g 🖨️ Prusa MK3/S/S+



lego-car-wall-mount-107x44_02mm_pla_mk3s_5h28m.gcode

🌀 PLA 📏 0.40 mm ⚖️ 0.20 mm ⌚ 5.46 hrs ⚖️ 58 g 🖨️ Prusa MK3/S/S+



lego-car-wall-mount-818x50_02mm_pla_mk3s_4h54m.gcode

🌀 PLA 📏 0.40 mm ⚖️ 0.20 mm ⌚ 4.90 hrs ⚖️ 50 g 🖨️ Prusa MK3/S/S+



lego-car-wall-mount-432x22_02mm_pla_mk3s_1h15m.gcode

🌀 PLA 📏 0.40 mm ⚖️ 0.20 mm ⌚ 1.25 hrs ⚖️ 11 g 🖨️ Prusa MK3/S/S+



lego-car-wall-mount-816x44_02mm_pla_mk3s_4h24m.gcode

🌀 PLA 📏 0.40 mm ⚖️ 0.20 mm ⌚ 4.40 hrs ⚖️ 45 g 🖨️ Prusa MK3/S/S+



lego-car-wall-mount-56x28_02mm_pla_mk3s_1h45m.gcode

🌀 PLA 🌀 0.40 mm ≡ 0.20 mm ⌚ 1.75 hrs ⚖️ 17 g 🖨️ Prusa MK3/S/S+



lego-car-wall-mount-495x20_02mm_pla_mk3s_1h16m.gcode

🌀 PLA 🌀 0.40 mm ≡ 0.20 mm ⌚ 1.26 hrs ⚖️ 11 g 🖨️ Prusa MK3/S/S+

[Find source .stl files on Thingiverse.com](#)

License ©

This work is licensed under a
GNU



General Public License v3.0

-
- ✖ | Sharing without ATTRIBUTION
 - ✓ | Remix Culture allowed
 - ✓ | Commercial Use
 - ✓ | Meets Open Definition
 - i | Share under the same license