

IR LED upgrade for PI CAM Fisheye on the Prusa Mini



Raphhorn

[VIEW IN BROWSER](#)

updated 19. 3. 2022 | published 19. 3. 2022

Summary

i wanted to see the print also with lights turned off so designed a IR LED mount

[3D Printers](#) > [Accessories](#)

Tags: [raspberrypi](#) [rasberrypicamera](#)

printed in PETG

you need :

1x M3x10

1x M3x16mm

2x M3 Nuts

you also need Wires and a soldering Iron to connecting the power from the cam to the IR LED as seen as on the Photos i put a connector in between you dont need that but it makes disattachment easier

This remix is based on



Prusa Mini Raspberry PI Fisheye Camera X-Axis Mount

by nad22

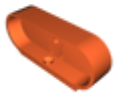
Model files



pi-cam-night-vision-light-deckel-v6.stl



pi-cam-fisheye-mount-nv-modified-left.stl



ir-pi-cam-mount.stl



pi-cam-fisheye-mount-nv-modified-rightstl.stl



pi-cam-night-vision-v8.f3d

License

This work is licensed under a
[Creative Commons \(International License\)](#)



Public Domain

- ✓ | Sharing without ATTRIBUTION
- ✓ | Remix Culture allowed

- ✓ | Commercial Use
- ✓ | Free Cultural Works
- ✓ | Meets Open Definition