

## Magnetic Enclosure Door Catch

 AthlonmanJR

[VIEW IN BROWSER](#)

updated 20. 3. 2022 | published 20. 3. 2022

### Summary

Door catch for acrylic panels that do not sit in the opening.



N/A



1 pcs



0.20 mm



0.40 mm



PLA



N/A



Creality  
Ender-3

[Hobby & Makers](#) > [Mechanical Parts](#)

Tags: [door](#) [enclosure](#) [magnetic](#) [catch](#)

These are magnetic door catches for my printer enclosure. The door for my enclosure is cut wider than the opening to account for the mistakes that I could've made when building the box. Because of this, I had to make custom catches that allowed the corners of the door to close without using models that encompassed the corners of the panel. These should work for 1/2" (12mm) plywood. They attach to the enclosure box using two 4 x 3/4" wood screws per door catch.

I made them using 10mm x 2mm round magnets that I had laying around from a previous project. They should be press-fit, but my was hit or miss on whether they would stay in the latches so YMMV. CA glue keeps them in place nicely just in case.

To attach the latches to the acrylic, the best way I found was to put CA glue on the magnet and let it attach itself in place to the door catch. Using a CA activator made this process instant.

Hopefully they can help someone else out with a similar situation.

Happy printing!

## Model files



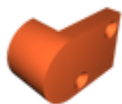
**door-latch-v1.f3d**



**door-catch-v2.f3d**



**door-latch-v1.stl**



**door-catch-v2.stl**

## Print files



**door-catch-v2.gcode**

🌀 PLA 🌀 0.40 mm ≡ 0.20 mm ⌚ 0.56 hrs 📊 10 g 📄 Creality Ender-3

# License

This work is licensed under a  
**Creative Commons (International License)**



## **Public Domain**

---

- ✓ | Sharing without ATTRIBUTION
- ✓ | Remix Culture allowed
- ✓ | Commercial Use
- ✓ | Free Cultural Works
- ✓ | Meets Open Definition