



Bottle Hook



Few467

[VIEW IN BROWSER](#)

updated 30. 3. 2022 | published 20. 3. 2022

Summary

A hook that you can screw on your bottle reuse and hang it everywhere.



2.36 hrs



4 pcs



0.15 mm



0.40 mm



PLA



13 g



Prusa
MK3/S/S+

[Gadgets](#) > [Other Gadgets](#)

Tags: [bottle](#) [hook](#) [contest](#) [ecology](#) [prusacontest](#)

Print Setup

Material: PETG, ASA, ABS, (PLA too, but it has low impact resistance, but it is usable with that too)

Print quality: 0.15, 0.10

Infill: 35-50 %

Supports: For the hook (Done in GCODE)

Model files

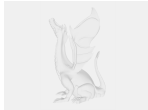


bottle-hook-big.stl



bottle-hook-small.stl

Print files



bottle-hook-big_015mm_pla_mini_2h11m.gcode

🌀 PLA 📏 0.40 mm 📐 0.15 mm ⌚ 2.18 hrs ⚖️ 12 g 🖨️ Prusa MINI / MINI+



bottle-hook-big_015mm_pla_mk3s_2h21m.gcode

🌀 PLA 📏 0.40 mm 📐 0.15 mm ⌚ 2.36 hrs ⚖️ 13 g 🖨️ Prusa MK3/S/S+



bottle-hook-small_015mm_pla_mk3s_1h58m.gcode

🌀 PLA 📏 0.40 mm 📐 0.15 mm ⌚ 1.99 hrs ⚖️ 10 g 🖨️ Prusa MK3/S/S+



bottle-hook-small_015mm_pla_mini_1h51m.gcode

🌀 PLA 📏 0.40 mm 📐 0.15 mm ⌚ 1.85 hrs ⚖️ 10 g 🖨️ Prusa MINI / MINI+

License ©

This work is licensed under a
[Creative Commons \(4.0 International License\)](https://creativecommons.org/licenses/by/4.0/)



Attribution

- ✘ | Sharing without ATTRIBUTION
- ✓ | Remix Culture allowed
- ✓ | Commercial Use
- ✓ | Free Cultural Works
- ✓ | Meets Open Definition