

## Spacer for K40 Laser and Cloudray Mirrorset



arminth

[VIEW IN BROWSER](#)

updated 12. 4. 2022 | published 20. 3. 2022

### Summary

When using the Cloudray mirror and laserhead set, the nozzle of the head can run into the protection baffle for the...

[Hobby & Makers](#) > [Other Ideas](#)

Tags: [spacer](#) [k40laser](#) [k40cloudrayhead](#)

When using the Cloudray mirror and laserhead set, the nozzle of the head can run into the protection baffle for the Y-axis motorshaft.

This simple clipon spacer prevents the head from running into the baffle. Just put it between the rubber bumper and the plastic piece of conduit, which originally is used as the hard stop.

OpenSCAD attached as usual for easy adaption.

Enjoy!

Cheers

Armin

### Print Settings

**Printer Brand:**

Crealitiy

**Printer:**

Ender 3

**Rafts:**

No

**Supports:**

No

**Resolution:**

0.2

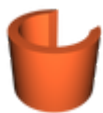
**Infill:**

20%

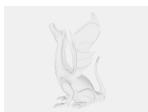
**Filament:** Noyes PLA white

Category: DIY

## Model files



spacer.stl



spacer.scad

[Find source .stl files on Thingiverse.com](#)

## License ©

This work is licensed under a

**Creative Commons (4.0 International License)**



## Attribution-NonCommercial

---

- ✗ | Sharing without ATTRIBUTION
- ✓ | Remix Culture allowed
- ✗ | Commercial Use
- ✗ | Free Cultural Works
- ✗ | Meets Open Definition