



Case for Wemos ESP32 D1 Mini



arminth

[VIEW IN BROWSER](#)

updated 12. 4. 2022 | published 20. 3. 2022

Summary

I have designed a small, handy case for the WEMOS ESP32 D1 Mini version. Board just snaps in place (start with the...

[Hobby & Makers](#) > [Electronics](#)

Tags: [esp32](#) [wemosd1mini](#) [wemosesp32](#)

I have designed a small, handy case for the WEMOS ESP32 D1 Mini version.

Board just snaps in place (start with the USB-port when inserting)

You need 4 M3x6 screws to fix the lid.

There are two versions of the lid:

Version 1 for directly soldering wires onto the board without pins and getting the wires out through the sidewall.

Version two to use Dupont cables to connect through the lid onto the board.

Case enables access to the resetbutton and a view to the LEDs

OpenSCAD-files included as always for easy customization.

Have fun!

Cheers

Armin

Print Settings

Printer Brand:

Creality

Printer:

Ender 3

Rafts:

No

Supports:

No

Resolution:

0,2

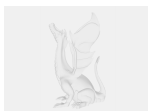
Infill:

15

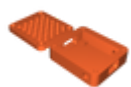
Filament: Noyes PLA anthrazit

Category: Electronics

Model files



d1mini.scad



d1mini_body_lid.stl



d1mini_lower_body.stl



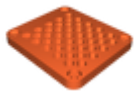
d1mini_lid_2.stl



d1mini.stl



d1mini_body_lid2.stl



d1mini_lid.stl

[Find source .stl files on Thingiverse.com](#)

License ©



This work is licensed under a
Creative Commons (4.0 International License)

Attribution-NonCommercial

-
- ✗ | Sharing without ATTRIBUTION
 - ✓ | Remix Culture allowed
 - ✗ | Commercial Use
 - ✗ | Free Cultural Works
 - ✗ | Meets Open Definition