



## Case for ESP32 radio



arminth

[VIEW IN BROWSER](#)

updated 12. 4. 2022 | published 20. 3. 2022

### Summary

I have built an ESP32 radio (<https://github.com/Edzelf/ESP32-Radio>) on a 70x50mm perfboard. The following key-...

[Hobby & Makers](#) > [Electronics](#)

Tags: esp32radio

I have built an ESP32 radio (<https://github.com/Edzelf/ESP32-Radio>) on a 70x50mm perfboard.

The following key-components were used:

Speakers <https://www.aliexpress.com/item/4000127737256.html?spm=a2g0s.9042311.0.0.22f54c4devAQBT>

MP3 decoder VS1053B <https://www.aliexpress.com/item/32809457097.html?spm=a2g0s.9042311.0.0.27424c4dQavbli>

Perfboard (70x50) <https://www.aliexpress.com/item/32588853051.html?spm=a2g0s.9042311.0.0.27424c4d87npFC>

Audio Amplifier <https://www.aliexpress.com/item/32947566785.html?spm=a2g0s.9042311.0.0.27424c4d87npFC>

ESP32 30 pin <https://www.aliexpress.com/item/32864722159.html?spm=a2g0s.9042311.0.0.27424c4d2KJadN>

Micro-USB port <https://www.aliexpress.com/item/32838750325.html?spm=a2g0s.9042311.0.0.27424c4dYuC8OP>

2.2" TFT [https://www.aliexpress.com/item/4000502419587.html?spm=a2g0o.productlist.0.0.6af29dfcDhAsys&algo\\_pvid=9c3ac323-f9c0-4bf1-90d4-f2b7ba0ab5f4&algo\\_expid=9c3ac323-f9c0-4bf1-90d4-f2b7ba0ab5f4-5&btsid=0b0a0ac216032207862953698ec355&ws\\_ab\\_test=searchweb0](https://www.aliexpress.com/item/4000502419587.html?spm=a2g0o.productlist.0.0.6af29dfcDhAsys&algo_pvid=9c3ac323-f9c0-4bf1-90d4-f2b7ba0ab5f4&algo_expid=9c3ac323-f9c0-4bf1-90d4-f2b7ba0ab5f4-5&btsid=0b0a0ac216032207862953698ec355&ws_ab_test=searchweb0)

Any rotary encoder with click arduino style.

Speaker grills, display bezel and resonance cans to be glued in place with superglue. The rest to be screwd together with M3 screws. Pretapping advised!

Choose any knob style of your liking

OpenSCAD file included as always for easy adapting to your personal needs.

Enjoy listen to the music!

## **Print Settings**

### **Printer Brand:**

Creality

### **Printer:**

Ender 3

### **Rafts:**

No

### **Supports:**

No

### **Resolution:**

0,2

### **Infill:**

10

**Filament:** Noyes PLA wooden, bronze, black

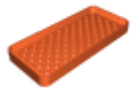
Category: Electronics

## Model files



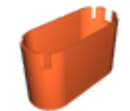
**rueckwand.stl**

---



**grill.stl**

---



**resonanztopf.stl**

---



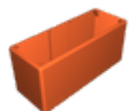
**display\_rahmen.stl**

---



**gehaeuse.scad**

---



**gehaeuse.stl**

[Find source .stl files on Thingiverse.com](#)

## License

This work is licensed under a  
**Creative Commons (4.0 International License)**



**Attribution-NonCommercial**

---

- ✘ | Sharing without ATTRIBUTION
- ✓ | Remix Culture allowed
- ✘ | Commercial Use
- ✘ | Free Cultural Works
- ✘ | Meets Open Definition