

# Katsu Router Dust Collection Improvement



arminth

[VIEW IN BROWSER](#)

updated 12. 4. 2022 | published 20. 3. 2022

## Summary

This is a simple remix of @Cosmas <https://www.thingiverse.com/Cosmas> dustcollector optimization to work with the...

[Hobby & Makers](#) > [Tools](#)

Tags: [router](#) [dustcollector](#) [optimization](#) [katsu](#)

This is a simple remix of @Cosmas <https://www.thingiverse.com/Cosmas> dustcollector optimization to work with the Makita clones like the Katsu.

Katsu's spindle-fixation tends to be a tad bigger and though is touching the original design preventing the router from being able to fully plunge down. This remix simply punches a half round hole in the side of the original design to avoid the collision.

I have included the OpenSCAD file as usual. You need to copy the two original STL from Cosmas into the same folder as the .scad file.

Enjoy ans thanks for the original design, Cosmas!

## Print Settings

**Printer Brand:**

Creality

**Printer:**

Ender 3

**Rafts:**

No

**Supports:**

Yes

**Resolution:**

0.2

**Infill:**

20%

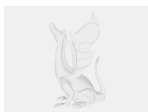
**Filament:** Noyes PLA wood

Category: Tools

## Model files



**katsu\_guide\_bushings.stl**



**katsu.scad**



**katsu\_dado.stl**

[Find source .stl files on Thingiverse.com](#)

# License

This work is licensed under a  
**Creative Commons (4.0 International License)**



**Attribution-NonCommercial**

---

- ✗ | Sharing without ATTRIBUTION
- ✓ | Remix Culture allowed
- ✗ | Commercial Use
- ✗ | Free Cultural Works
- ✗ | Meets Open Definition