

Filament runout sensor with cheap endstop switch Aliexpress



arminth

[VIEW IN BROWSER](#)

updated 12. 4. 2022 | published 20. 3. 2022

Summary

This is a filament runout sensor based on the very cheap endstop switch from aliexpress. Just add two pieces of Teflon...

[3D Printers](#) > [3D Printers - Upgrades](#)

Tags: [filamentrunoutsens](#)

This is a filament runout sensor based on the very cheap endstop switch from aliexpress.

Just add two pieces of Teflon bowdentube and two short M3 screws for attaching the switch.

You can also attach the switch to a V-slot extrusion using an M3 screw and a hammernut.

OpenSCAD file included for easy adaption

Print Settings

Printer Brand:

Anycubic

Printer:

Kossel

Rafts:

No

Supports:

No

Resolution:

0.2 or 0.16

Infill:

20%

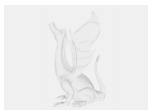
Filament: Noyes PLA black

Category: 3D Printer Parts

Model files



large_display_runout_sensor_152782.stl



runout_sensor.scad



runout_sensor.stl

[Find source .stl files on Thingiverse.com](https://www.thingiverse.com/thing/152782)

License ©

This work is licensed under a
Creative Commons (4.0 International License)



Attribution

- ✗ | Sharing without ATTRIBUTION
- ✓ | Remix Culture allowed
- ✓ | Commercial Use
- ✓ | Free Cultural Works
- ✓ | Meets Open Definition