

Push Cap / Stopfer Kenwood Food Processor AT340



arminth

[VIEW IN BROWSER](#)

updated 12. 4. 2022 | published 20. 3. 2022

Summary

My push cap broke for the Kenwood food processor AT340 (Chef Titanium). So I made a simple new one. The original...

[Household](#) > [Kitchen](#)

Tags: [kenwood](#) [at340](#)

My push cap broke for the Kenwood food processor AT340 (Chef Titanium). So I made a simple new one. The original measuring cup insert fits perfectly.

OpenSCAD file to follow.

Print Settings

Printer Brand:

Creality

Printer:

Ender 3

Rafts:

No

Resolution:

0,2

Infill:

7%

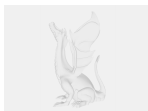
Filament:

Noyes PLA

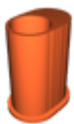
transparent

Category: Kitchen & Dining

Model files



stopfer.scad



stopfer.stl

[Find source .stl files on Thingiverse.com](#)

License

This work is licensed under a
Creative Commons (4.0 International License)



Attribution-NonCommercial

-
- ✗ | Sharing without ATTRIBUTION
 - ✓ | Remix Culture allowed
 - ✗ | Commercial Use

- ✖ | Free Cultural Works
- ✖ | Meets Open Definition