

Plug for 25/2mm stainless steel conduit for MPCNC



arminth

[VIEW IN BROWSER](#)

updated 12. 4. 2022 | published 20. 3. 2022

Summary

Two types of plugs to close open ends of 25/2mm tubes on MPCNC. One type with cables and one without cables.

[Hobby & Makers](#) > [Tools](#)

Tags: [25mm](#) [mpcnc](#) [mpcncaddon](#)

Two types of plugs to close open ends of 25/2mm tubes on MPCNC.

One type with cables and one without cables.

Print Settings

Printer Brand:

Creality

Printer:

Ender 3

Rafts:

No

Supports:

No

Resolution:

0.16

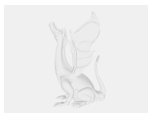
Infill:

20%

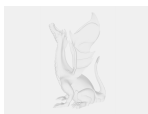
Filament: Noyes PLA orange neon

Category: Machine Tools

Model files



plug.scad



plug_2.scad



plug.stl



plug_2.stl

[Find source .stl files on Thingiverse.com](#)

License ©

This work is licensed under a
[Creative Commons \(4.0 International License\)](#)



Attribution

- ✘ | Sharing without ATTRIBUTION
- ✓ | Remix Culture allowed
- ✓ | Commercial Use
- ✓ | Free Cultural Works
- ✓ | Meets Open Definition