

Configurable Height Test



arminth

[VIEW IN BROWSER](#)

updated 12. 4. 2022 | published 20. 3. 2022

Summary

Quick test to check if your printer can cope with a specified height. Use configurator to create your desired model...

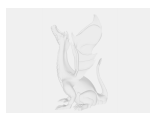
[3D Printers](#) > [Accessories](#)

Tags: [zaxis](#) [maxheight](#)

Quick test to check if your printer can cope with a specified height. Use configurator to create your desired model height.

Category: 3D Printer Accessories

Model files



hitower.scad



hitower.stl

License ©

This work is licensed under a
Creative Commons (4.0 International License)



Attribution

- ✗ | Sharing without ATTRIBUTION
- ✓ | Remix Culture allowed
- ✓ | Commercial Use
- ✓ | Free Cultural Works
- ✓ | Meets Open Definition