

Anycubic Kossel Linear Plus 18mm ABL sensor-mount



arminth

[VIEW IN BROWSER](#)

updated 12. 4. 2022 | published 20. 3. 2022

Summary

Update: improved version and now with the correct openSCAD-file! ;) This is a mount for the 18mm distance sensor probe...

[3D Printers](#) > [Accessories](#)

Tags: [mount](#) [zprobe](#) [anycubickosselplus](#) [abl](#) [ljc18a3hzbx](#)

Update: improved version and now with the correct openSCAD-file! ;)

This is a mount for the 18mm distance sensor probe (e.g. LJC18A3-H-Z/BX).

The ones I found on Thingiverse all placed the probe very far outside the effector which limited the printing-radius.

I found that if you grind down a little of the lower threaded part of the sensor to the diameter of the plastic cap, it fits between the rods of the effector (not the parallel ones!!). This made it possible to get as close to the effector as possible. The mount is attached with the original screws on top of the hotend-assembly. You also don't need the giant 18mm nuts and washers!

After making some changes to the firmware like relative position to nozzle, maximum probe-radius and some others, you can enjoy ABL for low cost.

I will update this later.

I added the openSCAD-file if you want to alter something.

Enjoy.

Print Settings

Printer:

Anycubic Kossel Linear Plus

Rafts:

No

Supports:

No

Resolution:

0.2

Infill:

30%

Notes:

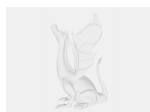
Flip the model so that the upper side lays flat on the bed.

Category: 3D Printer Accessories

Model files



18mm_probemount_anycubic_kossel_plus.stl



18mm_probemount_anycubic_kossel_plus.scad

[Find source .stl files on Thingiverse.com](https://www.thingiverse.com/thing/4588881/files)

License ©

This work is licensed under a
Creative Commons (4.0 International License)



Attribution

- ✗ | Sharing without ATTRIBUTION
- ✓ | Remix Culture allowed
- ✓ | Commercial Use
- ✓ | Free Cultural Works
- ✓ | Meets Open Definition