



Mount for WLANThermo Nano on Weber 57 BBQ- Kettle and Napoleon P500 1.25" handle



arminth

[VIEW IN BROWSER](#)

updated 12. 4. 2022 | published 20. 3. 2022

Summary

Update as of 19.6.2018!! This is a universal mount to attach the WLANThermo Family of BBQ-Thermometers to the leg of a...

[Household](#) > [Outdoor & Garden](#)

Update as of 19.6.2018!!

This is a universal mount to attach the WLANThermo Family of BBQ-Thermometers to the leg of a Weber 57cm BBQ-Kettle or the handle of a 1.25" Gas-Grill like eg. Napoleon Prestige 500.

Configure both parts according to your needs (translation of the german parameters in the comments of the SCAD-files) and then slice and print them. halter_universal needs to be sliced with support (not only from printbed!!) to print the little overhanging parts that later hold the WLANThermo in place. Then mount an M4 hexnut and use an M4 Screw with appropriate length (depending on your configuration) and to attach clamp to mount.

Just push it over the kettle's leg or clamp on handle- done!

Reference-values for configuration:

bodenstaerke=6; //bottom thickness, 4mm minimum to allow hexnut to sit flat below thermometer

wandstaerke=3; //wall thickness

haltenase=1.5; //retention size. Dont exceed this value or you may break the case while mounting. 1.5 - 1 is sufficient!

breite=105; // width of thermometer (flat side to flat side, NOT diagonal!)
105 for Mini and Mini V2, 60 for Nano

hoehe=36.5; //height of thermometer (thickness), 36.5 for Mini and Mini V2, 18 for Nano

toleranz=0.5; //tolerance allows play inside mount. 0.5 is a good start

// customizing ends here

These values are based on the use of <https://www.thingiverse.com/thing:2145158>

and <https://www.thingiverse.com/thing:2713734>

for the Mini/MiniV2

and <https://www.thingiverse.com/thing:2375923>

for the Nano.

Reference-Configuration for the leg- and handle-clamp:

innendurchmesser=31.25; //inner diameter, 31.25 for Napoleon handle, 25 for Weber kettle-leg

wandstaerke=3; //wall-thickness

breite=25; //clamp-width

oeffnung=0.77; // percentage of diameter for the opening

flanschbreite=15; //width of flanch

flanschhoehe=5; //thickness of flanch, make sure it is > wandstaerke/2

This can be printed with no support!

If you want to use customizer-app for both parts, please go to

<https://www.thingiverse.com/thing:2968667>

Customizer only supports one SCAD-file atm.

Find out more about the awesome family of BBQ-thermometers for makers and BBQ-professionals on

<https://www.wlanthermo.de>

Enjoy!

Cheers Armin (aka inventor of the WLANThermo/DerPapa)

Print Settings

Printer:

Anycubic Kossel linear plus

Rafts:

No

Supports:

Yes

Resolution:

0.2

Infill:

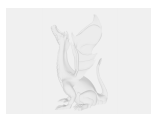
20%

Notes:

Use support everywhere, not from Bed only.

Category: Outdoor & Garden

Model files



halter_universal.scad



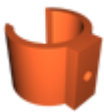
halter_universal_nano.stl



klemme_universal.scad



klemme_universal_spiess_nano.stl



klemme_universal_weber_kettle_leg_25.stl



klemme_universal_napoleon_handle_31.stl



halter_universal_mini.stl

[Find source .stl files on Thingiverse.com](#)

License ©

This work is licensed under a
Creative Commons (4.0 International License)



Attribution

- ✗ | Sharing without ATTRIBUTION
- ✓ | Remix Culture allowed
- ✓ | Commercial Use
- ✓ | Free Cultural Works
- ✓ | Meets Open Definition

