



## Fully configurable tripod adapter



arminth

[VIEW IN BROWSER](#)

updated 12. 4. 2022 | published 20. 3. 2022

### Summary

I lost my adapterplate for my old tripod. Before throwing the tripod away, I started to experiment with OpenSCAD and...

[Gadgets](#) > [Photo & Video](#)

Tags: [mount](#) [tripod](#) [adapter](#) [fotopro](#) [unomat](#)

I lost my adapterplate for my old tripod. Before throwing the tripod away, I started to experiment with OpenSCAD and it turned out to be pretty usable.

With the included OpenSCAD-files you can design an adaptermount for your own tripod.

Attached are two versions that show the possibilities of the script. Adapterplatte.scad is preconfigured for a Unomat tripod including two notches on top. Adapterplatte\_Fotopro\_Digi-3400\_Pro.stl is for a Fotopro tripod bought on [Amazon](#). Same file but different parameters.

Just add a standard cameramount-screw (available on ebay).

Have fun!

## Print Settings

### Printer:

Anycubic Kossel Linear Plus

### Rafts:

No

### Supports:

Yes

### Resolution:

0.2

### Infill:

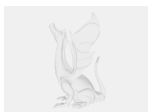
60%

### Notes:

If topplate is bigger than the foot, place model with topplate facing down on buildplatform. Else foot is facing down.

Category: Camera

## Model files



**adapterplatte\_fotopro\_digi-3400\_pro.scad**

---



**adapterplatte\_fotopro\_digi-3400\_pro.stl**

---



**adapterplatte.stl**

---



**adapterplatte.scad**

[Find source .stl files on Thingiverse.com](#)

## License ©

This work is licensed under a  
**Creative Commons (4.0 International License)**



### Attribution

---

- ✗ | Sharing without ATTRIBUTION
- ✓ | Remix Culture allowed
- ✓ | Commercial Use
- ✓ | Free Cultural Works
- ✓ | Meets Open Definition