



Circle jig for DeWalt DCW600 DSW604

 **Kajasx**

[VIEW IN BROWSER](#)

updated 29. 5. 2023 | published 29. 5. 2023

Summary

Circle jig for DeWalt DCW600 DSW604, which attaches to the original parallel stop guide

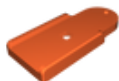
[Hobby & Makers](#) > [Tools](#)

Tags: [circlejig](#) [dcw600](#) [dcw604](#) [dewalt](#)

Circle jig for DeWalt DCW600 DSW604, which is attached to the original guide of the parallel stop and also uses the original locking screw. It is only necessary to melt the nut M3 to fix the circle axis

Model files

dewalt-kruzitko-v2.stl



License

This work is licensed under a
Creative Commons (4.0 International License)



Attribution-NonCommercial

- ✗ | Sharing without ATTRIBUTION
- ✓ | Remix Culture allowed
- ✗ | Commercial Use
- ✗ | Free Cultural Works
- ✗ | Meets Open Definition