

Mounting Brackets DRO Reading Head



werz 99

[VIEW IN BROWSER](#)

updated 20. 3. 2022 | published 20. 3. 2022

Summary

Mounting Brackets for the Lathe DRO Readingheads for all Axis



1.67 hrs



3 pcs



0.20 mm



0.40 mm



PLA
PET



26 g



Prusa
MK3/S/S+

[Hobby & Makers](#) > [Mechanical Parts](#)

Tags: [bracket](#) [dro](#) [lathe](#) [readinghead](#)

Brackets for all Axis (X, Z0, Z1) to connect the Reading Head of the Magnetic DRO to the Crossslide, Carriage and Compound.

Designed for a HBM 250 x 550 Profi Norton Lathe.

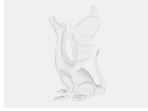
Project Based on "Bene DRO" - see [HERE](#) and

[Zerspanungsbude-Forum](#)

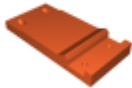
Model files



dro-1k-abstand-z1.stl



dro-1k-abstand-x.stl



dro-1k-abstand-z0.stl

Print files



dro-1k-abstand-z1_02mm_greentec_mk3s_11m.gcode

⚙️ PLA ⚙️ 0.40 mm ⚙️ 0.20 mm ⌚ 0.18 hrs ⚖️ 1 g 🖨️ Prusa MK3/S/S+



dro-1k-abstand-x_02mm_greentec_mk3s_25m.gcode

⚙️ PLA ⚙️ 0.40 mm ⚙️ 0.20 mm ⌚ 0.42 hrs ⚖️ 5 g 🖨️ Prusa MK3/S/S+



dro-1k-abstand-z0_02mm_petg_mk3s_1h4m.gcode

⚙️ PET ⚙️ 0.40 mm ⚙️ 0.20 mm ⌚ 1.07 hrs ⚖️ 20 g 🖨️ Prusa MK3/S/S+

License ©

This work is licensed under a
[Creative Commons \(4.0 International License\)](https://creativecommons.org/licenses/by-nc-sa/4.0/)



Attribution—Noncommercial—Share Alike

- ✗ | Sharing without ATTRIBUTION
- ✓ | Remix Culture allowed
- ✗ | Commercial Use
- ✗ | Free Cultural Works
- ✗ | Meets Open Definition