

# MAGNETIC TOWEL HOOK



janvdg

[VIEW IN BROWSER](#)

updated 21. 3. 2022 | published 20. 3. 2022

## Summary

this is a magnetic kitchen towel hook. it is verry easy to just drag the towel free end to slide it back under.

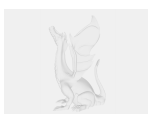
[Household](#) > [Kitchen](#)

Tags: [kitchen](#) [hook](#) [towel](#) [magnetic](#)

this is a design for a single or multiple magnetic towel hook. it is primarily designed for magnets with a diameter of 12 mm, but I added the step files for you to adjust.

it is very simple to just drag the towel loose or slip it under the magnetic lever.

## Model files



**towel-rack.step**



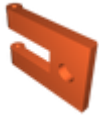
**towel-rack-closing-cap.stl**

---



**towel-rack-fixed-multiple.stl**

---



**towel-rack-fixed-singe.stl**

---



**towel-rack-handle.stl**

## License



This work is licensed under a  
[Creative Commons \(4.0 International License\)](https://creativecommons.org/licenses/by-nc-sa/4.0/)

**Attribution—Noncommercial—Share Alike**

---

- ✗ | Sharing without ATTRIBUTION
- ✓ | Remix Culture allowed
- ✗ | Commercial Use
- ✗ | Free Cultural Works
- ✗ | Meets Open Definition