

Camera (tripod) screw 1/4"-20 UNC



sbuerger

[VIEW IN BROWSER](#)

updated 2. 8. 2023 | published 2. 8. 2023

Summary

Classic style tripod screw, STL and STEP

[Gadgets](#) > [Photo & Video](#)

Tags: [actioncam](#) [bolt](#) [gopro](#) [runcam](#) [runcam2](#)

This is a standard camera screw, as included with most tripods. The knurled headplate is a real stress test for FDM printers. ;)

Due to the tiny dimensions, I recommend printing it using the highest resolution/lowest layer height your printer is capable of. The part in the photo was printed at 0.08 mm using a 0.4 mm nozzle. And **no**, you **don't** need any support to print this.

And, by the way: **No**, when it comes to printing screw threads, a **finer nozzle** is **not beneficial at all** - the best layer adhesion in this case is achieved with a 0.6 mm nozzle while a 0.4 mm nozzle provides the best compromise of thread quality and knurling detail. Using a 0.3 mm or finer nozzle produces a weaker thread and should be avoided.

Warning: A plastic screw can not replace a metal screw, not even as an emergency substitute. Use this part only

- a) for lightweight cameras (i.e. drone cams, action cams)
- b) for applications in which the screw is the predetermined breaking point (like mounting a camera to drones, RC car or airplane models) or
- c) for applications in which the camera is not moved anymore after

mounting (like a webcam or printer cam).

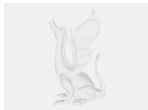
If you don't necessarily need the flat head and threaded plate compatibility, have a look at the camera screws I included with my [Runcam 2 mounting kit](#). These have the very same thread, but the non-threaded part is thicker, so they are somewhat sturdier.

If you want to use the screw for your own CAD construction work, use one of the STEP files added. Please note that there are two different files: “Camera screw 1_4 original UNC” features the original thread dimensions as defined for UNC 1/4-20 while “Camera screw 1_4 3D printing” has a slight thread surface offset to compensate 3D printing effects (just like the STL).

Model files



camera-screw-1_4.stl



camera-screw-1_4-3d-printing.step



camera-screw-1_4-original-unc.step

License ©



This work is licensed under a [Creative Commons \(4.0 International License\)](#)

Attribution—Noncommercial—Share Alike

- ✗ | Sharing without ATTRIBUTION
- ✓ | Remix Culture allowed
- ✗ | Commercial Use
- ✗ | Free Cultural Works

✖ | Meets Open Definition