



Arducam B0031 with M12 Lens Camera Case for Articulating Raspberry Pi Mount



Itlowe

[VIEW IN BROWSER](#)

updated 21. 3. 2022 | published 20. 3. 2022

Summary

Arducam B0031 with M12 Lens Camera Case for Articulating Raspberry Pi Mount

[3D Printers](#) > [3D Printers - Upgrades](#)

Tags: [raspberrypi](#) [raspberrypicamera](#) [arducam](#) [cameracase](#)
[arducamcase](#) [arducamrpicam](#) [arducamb0031](#)

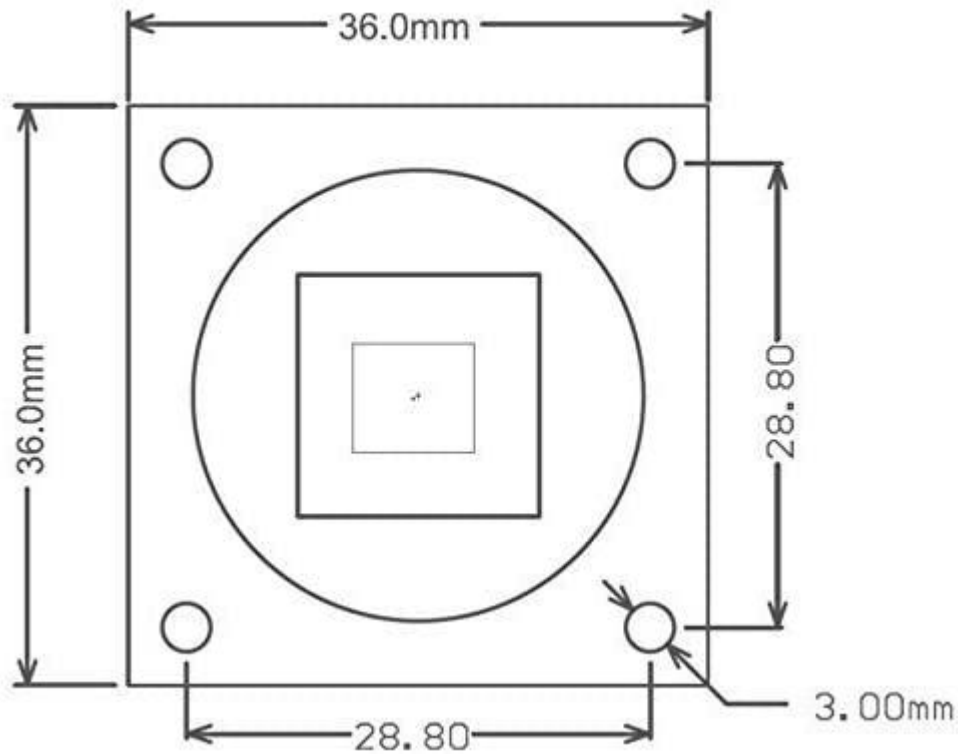
It seems there are many many board sizes for Raspberry Pi cameras. Here is a case and cover for the Arducam B0031 with M12 lens to fit Sneaks' Articulating mount.

I included screw holes in the mount, but the fit is tight enough with the matching front cover that screws shouldn't be needed.

The B0031 has a power led, so I also made a hole in the cover for it to shine through.

Board dimensions:

Mechanical Dimension



This remix is based on



Articulating Raspberry Pi Camera Mount for Prusa MK3 and MK2

by Sneaks

Model files



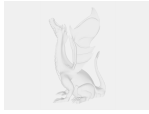
mount.3mf



cover.3mf



mount.step



cover.step

License

This work is licensed under a
Creative Commons (4.0 International License)



Attribution—Noncommercial—Share Alike

-
- ✗ | Sharing without ATTRIBUTION
 - ✓ | Remix Culture allowed
 - ✗ | Commercial Use
 - ✗ | Free Cultural Works
 - ✗ | Meets Open Definition