

## Tits - Bike valve cap

[VIEW IN BROWSER](#)

updated 11. 8. 2022 | published 21. 3. 2022

## Summary

Air valve cap - for your MTB or motorbike or car (not for Presta!). Female breasts on your tire.

[Sports & Outdoor](#) > [Outdoor Sports](#)

Tags: [bicycle](#) [bike](#) [bustyfemale](#) [cap](#) [car](#) [femalebody](#)  
[femaletorso](#) [motorbike](#) [nudefemale](#) [tire](#) [torso](#) [valve](#)

## Description

Info:

- another bike valve cap model, this time female breasts
- remix of my other bike valve caps & **busty female**

### Not for presta valve!

Print instructions:

- **0.4mm nozzle** works good for me (for my MTB), I have already scaled original to best fit, so just print this at 100% scale or adjust slightly.

- **3mf** file contains variable layer height, bottom part must be 0.05 layer height so the thread works well
  - also lower breasts part can be problematic, print that in detail too
- **no supports**

## This remix is based on



### **Motorbike Valve Cap with Rude Finger**

by Robin\_Pe



### **Rock&Roll horns hand - bike valve cap**

by



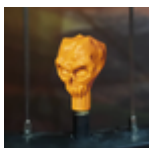
### **Aloha Shaka hand - Bike valve cap**

by



### **Fist - Bike valve cap**

by



### **Skull - Bike valve cap**

by



### **♀ Busty Female Body (Vase mode)**

by



### **Rock&Roll horns hand (with open thumb) - Bike valve cap**

by

# Model files



valve-cap-breast.3mf



valve-cap-breast.stl

## License ©

This work is licensed under a  
[Creative Commons \(4.0 International License\)](#)



**Attribution-NonCommercial**

- 
- ✗ | Sharing without ATTRIBUTION
  - ✓ | Remix Culture allowed
  - ✗ | Commercial Use
  - ✗ | Free Cultural Works
  - ✗ | Meets Open Definition