



## DJI Inspire 2 SSD Holder



ByteSlinger

[VIEW IN BROWSER](#)

updated 12. 4. 2022 | published 21. 3. 2022

### Summary

This is a protector for safely storing a single DJI Inspire 2 SSD card. When out on location during a shoot, if you...

[Gadgets](#) > [Photo & Video](#)

Tags: [holder](#) [drone](#) [protector](#) [dji](#) [ssd](#)

This is a protector for safely storing a single DJI Inspire 2 SSD card.

When out on location during a shoot, if you fill up a card but are not near your case, you may feel inclined to slip the card into your pocket or your bag. This isn't a great idea as it can easily get knocked around or worse, something could damage or gum up the pins.

This is a simple and effective, compact sheath for an Inspire 2 SSD card that will protect it from small knocks and more importantly, protects the pins from damage.

It has the added bonus of the cutout at the top that you can use to mark whether the card has been shot on, or if it's empty and ready for use.

If the DJI logo is showing, then the card has been shot on. If the gap for the logo is empty, then so is the card. Simply choose which way around you slot the card in to mark it appropriately.

I've only printed these in PLA and the fit is perfect. Based on comments

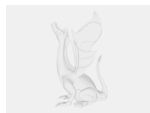
from others that have printed it, they found that PETG was becoming too tight, but as soon as they tried a print in PLA it was perfect.

If you like this model, you can tip me via 'Buy Me a Coffee' here: <https://www.buymeacoffee.com/JoshForwood>

(I've also made a dual SSD holder that can hold 2x Inspire 2 SSD's: <https://www.thingiverse.com/thing:3868857>)

Category: Camera

## Model files



**large\_display\_singlessdholder\_153194.stl**



**singlessdholder.stl**

[Find source .stl files on Thingiverse.com](#)

## License ©

This work is licensed under a  
[Creative Commons \(4.0 International License\)](#)



**Attribution-NonCommercial**

- 
- ✗ | Sharing without ATTRIBUTION
  - ✓ | Remix Culture allowed
  - ✗ | Commercial Use
  - ✗ | Free Cultural Works
  - ✗ | Meets Open Definition