

Twist Lock Egg

 3D Printy

[VIEW IN BROWSER](#)

updated 18. 2. 2023 | published 18. 2. 2023

Summary

This tricky egg has a hidden latch mechanism that will keep it securely closed until you twist a portion of the base.

[Household](#) > [Other House Equipment](#)

Tags: [box](#) [puzzle](#) [container](#) [easter](#) [egg](#)

This tricky egg has a hidden latch mechanism that will keep it securely closed until you twist a portion of the base.

https://youtu.be/_xfY4cGHNbw

<https://youtu.be/1muiuHjyLIU>

Printing

All parts can be printed without supports.

Options

- Default Middle Shell - Sits flush with the egg surface. Use to keep the mechanism more hidden.
- Raised Middle Shell - Sits above the egg surface to make opening the egg easier.

- “Happy Easter” Middle Shell - Adds a holiday greeting around the middle of the shell.
- Spring and Bottom Shell with Bolt Hole - Use these with an M3 bolt instead of glue to attach the bottom shell to the spring.

Assembly

Assembly is the same as the original [Twist Lock Trick Box](#). Watch [this video](#) for the complete process.

Make sure to pre-tension the spring

This will assure that the latches have a strong hold on the base.

Make sure to glue the spring peg to the bottom shell

If you do not fully secure these parts, the mechanism may become detached while in a locked state. I recommend using either super glue or [3D Gloop!](#), but hot glue can work as well.

Can I sell copies of this?

Yes! This project was shared under the [Creative Commons - Attribution](#) license.

This license allows selling copies, but you must provide proper attribution, as detailed in the license itself.

Please note that any other projects linked here (remixes or related projects) may have a different license. Please respect those licenses.

[Click here for attribution examples](#)

This remix is based on



Twist Lock Trick Box (Hexagon)

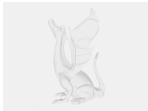
by 3D Printy

Model files



Assembled

1 file



assembled.step



Shell

3 files



shell-top.stl



shell-bottom.stl



shell-middle.stl



Mechanism

2 files



spring.stl



latch.stl



Alternate Parts and Customizations

5 files



shell-middle-raised.stl



shell-middle-happy-easter.stl



stand.stl

spring-with-bolt-hole.stl

shell-bottom-with-bolt-hole.stl

License



This work is licensed under a
[Creative Commons \(4.0 International License\)](https://creativecommons.org/licenses/by/4.0/)

Attribution

- ✗ | Sharing without ATTRIBUTION
- ✓ | Remix Culture allowed
- ✓ | Commercial Use
- ✓ | Free Cultural Works
- ✓ | Meets Open Definition