

## Smiling Toothbrush & Toothpaste cup



cobraroja

[VIEW IN BROWSER](#)

updated 25. 12. 2022 | published 25. 12. 2022

### Summary

Added curved surface and hole at the bottom to help water sinking.  
Remixed from...

[Household](#) > [Bathroom](#)

Tags: [toothpaste](#) [toothbrushholder](#)

Added curved surface and hole at the bottom to help water sinking.

Remixed from <https://www.thingiverse.com/thing:68646>

Edit: Updated model to reduce central sink and add small sinks.

### Print Settings

#### Printer Brand:

Creality

#### Printer:

Ender 3

#### Rafts:

No

**Supports:**

Yes

**Resolution:**

0.2

**Infill:**

20

**Filament:** BQ PLA Red How I Designed This

=====

Fusion360

Category: Bathroom

## This remix is based on



**Smiling Toothbrush & Toothpaste cup**

by spooner2011

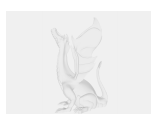
## Model files



**smile.stl**



**toothbrush.stl**



**toothbrush\_v5.f3d**

[Find source .stl files on Thingiverse.com](https://www.thingiverse.com)

# License ©

This work is licensed under a  
**Creative Commons (4.0 International License)**



## Attribution

---

- ✗ | Sharing without ATTRIBUTION
- ✓ | Remix Culture allowed
- ✓ | Commercial Use
- ✓ | Free Cultural Works
- ✓ | Meets Open Definition