

Leveltext 300x300 mm (30x30 cm)



Modisch Fabrications

[VIEW IN BROWSER](#)

updated 12. 4. 2022 | published 21. 3. 2022

Summary

Simple leveling test for 30x30cm Printers. Live-leveling is recommended. Recommended nozzle size is 0.4mm with a layer...

[3D Printers](#) > [Test Models](#)

Tags: [test](#) [cr10](#) [cr10s](#) [leveling](#) [bedleveling](#) [30x30](#)
[300x300](#)

Simple leveling test for 30x30cm Printers.

Live-leveling is recommended.

Recommended nozzle size is 0.4mm with a layer height of 0.2mm.

Attached is a Simplify3D factory file for the CR-10s, use at your own risk.

Print Settings

Rafts:

No

Supports:

No

Resolution:

0.2 mm layer height

Infill:

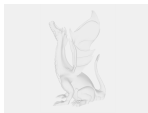
Doesn't matter

Category: 3D Printing Tests

Model files



leveltest.stl



leveltest.factory

[Find source .stl files on Thingiverse.com](#)

License

This work is licensed under a
Creative Commons (4.0 International License)



Attribution-ShareAlike

-
- ✗ | Sharing without ATTRIBUTION
 - ✓ | Remix Culture allowed
 - ✓ | Commercial Use
 - ✓ | Free Cultural Works
 - ✓ | Meets Open Definition