



C270 Mount for Articulating Camera Mount for Mk3 and Mk2



TechButterfly

[VIEW IN BROWSER](#)

updated 22. 3. 2022 | published 22. 3. 2022

Summary

Mount for Logitech C270 on Sneaks' articulating camera arm.

[3D Printers](#) > [3D Printers - Upgrades](#)

Tags: c270

I really like Sneaks' articulating camera arm, but couldn't find a C270 mount for it, so I made one.

The outside hole on the mount is 3.6mm to allow a 3mm screw through. The inside hole is 2.8mm so you can just thread the screw into it. An 18mm or 20mm screw should be fine.

F3D file included in case someone wants to modify it.

This remix is based on



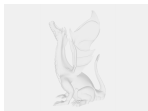
Articulating Raspberry Pi Camera Mount for Prusa MK3 and MK2

by Sneaks

Model files



c270articulatedarmmount_v3.stl



c270_mount_for_articulated_arm.f3d

License ©

This work is licensed under a
[Creative Commons \(4.0 International License\)](#)



Attribution

- ✗ | Sharing without ATTRIBUTION
- ✓ | Remix Culture allowed
- ✓ | Commercial Use
- ✓ | Free Cultural Works
- ✓ | Meets Open Definition