

Marvel United (Season 1 & 2) Miniatures Box Insert

t tshelley

[VIEW IN BROWSER](#)

updated 23. 5. 2022 | published 22. 3. 2022

Summary

This insert allows you to store all the miniatures from Marvel United Season 1 and Season 2 in SQ boxes

[Toys & Games](#) > [Board Games](#)

Tags: [boardgameinsert](#) [boardgameinserts](#) [boardgameorganizer](#)
[marvel](#) [marvelunited](#)

Updated 05/18/2022

- Added new 79x1 (in three fits) to support season 2 minatures
- Added new labels for Season 2
- Updated Instructions for Season 2

Updated 03/28/2022

- Added new medium fit files (see "Optimizing Fit" section below)

Updated 03/27/2022

- Added new loose fit files (see "Optimizing Fit" section below)

- Updated the character name plate to fit correctly (character_name_plate_v2)

Note: If you want a solution for storing your Marvel United cards and villain dashboards, see my other model: [Marvel United Card Trays](#)

Season 1 and 2 Instructions

This insert allows you to fit all 85 miniatures from a Marvel United Season 1 and Season 2 in their respective stretch goals box (**Note: This does not include the Sentinals or the three “large” based minis from Season 2.** An additional insert is coming to support those being stored in the Sentinals box)

Given the unique size and shape of each miniature, you will need to put each mini in the appropriate sized tray (you can use my images as reference on where you may want to put each of them). Some require the models to be rotated so that they share space with their neighbors.

Assembly

Each tray is comprised of 4 (or 5) rows. Each row comes in two parts (so they fit on smaller printers like the Prusa Mini) and need to be glued together after printing. If you have a larger format printer you can simply combine them in your slicing software and print them as a single piece (you need a 250mm or larger build plate)

After assembling each row, you should glue two rows together to make it easier to remove the trays.

Required parts

Print the parts based on how much of the game you own.

Season 1 - Option 1 - All-in Kickstarter (85 total miniatures)

Use this option if you own everything in Season 1

Note: These token trays won't be able to hold every token from all expansions, you may have to store a few tokens elsewhere

Trays 1 & 2:

- Row A - Character tray 65x3, Character tray 65x4
- Row B/C/D - Character tray 56x3, Character tray 56x4

Tray 3:

- Row A - Character tray 40x3, Character tray 40x4
- Row B/C/D - Character tray 45x3, Character tray 45x4
- Row E - Character tray 55x1, Token tray 1 (Short), Token tray 2 (Short)

Totals:

- Character tray 65x3 - Qty 2
- Character tray 65x4 - Qty 2
- Character tray 56x3 - Qty 6
- Character tray 56x4 - Qty 6
- Character tray 40x3 - Qty 1
- Character tray 40x4 - Qty 1
- Character tray 45x3 - Qty 3
- Character tray 45x4 - Qty 3
- Character tray 55x1 - Qty 1
- Token tray 1 (short) - Qty 1
- Token tray 2 (short) - Qty 1

Season 2 - Option 2 - Partial Kickstarter (84 or less total miniatures)

This is useful if you have everything except Adam Warlock or Yondu (this is the version pictured)

Trays 1 & 2:

- Row A - Character tray 65x3, Character tray 65x4
- Row B/C/D - Character tray 56x3, Character tray 56x4

Tray 3:

- Row A - Character tray 40x3, Character tray 40x4
- Row B/C/D - Character tray 45x3, Character tray 45x4
- Row E - Token tray 1 (Long), Token tray 2 (Long)

Totals:

- Character tray 65x3 - Qty 2
- Character tray 65x4 - Qty 2
- Character tray 56x3 - Qty 6
- Character tray 56x4 - Qty 6
- Character tray 40x3 - Qty 1
- Character tray 40x4 - Qty 1
- Character tray 45x3 - Qty 3
- Character tray 45x4 - Qty 3
- Token tray 1 (long) - Qty 1
- Token tray 2 (long) - Qty 1

Season 2 - All-in Kickstarter (115 total miniatures)

Use this option if you own everything in Season 2.

Note: This does NOT store the Sentinals or the three large based minis. An additional insert will be added in the future to support those models

Trays 1, 2 & 3:

- Row A - Character tray 65x3, Character tray 65x4
- Row B/C/D - Character tray 56x3, Character tray 56x4

Tray 3:

- Row A - Character tray 40x3, Character tray 40x4
- Row B/C/D - Character tray 45x3, Character tray 45x4
- Row E - Character tray 79x1, Character tray 79x1, Character tray 79x1

Season 2 Totals:

- Character tray 65x3 - Qty 3
- Character tray 65x4 - Qty 3
- Character tray 56x3 - Qty 9
- Character tray 56x4 - Qty 9
- Character tray 40x3 - Qty 1
- Character tray 40x4 - Qty 1
- Character tray 45x3 - Qty 3
- Character tray 45x4 - Qty 3
- Character tray 79x1 - Qty 3

Optional (both) - Character name plates

These are optional but will slot in front of each miniature to allow you to label each character (useful if you play with people who are not totally familiar with each Marvel character). You will need 85 (or 84) of these. If you want to print them out in different colors (like I did) you will need 28 for the villains and 56 (or 55) for the heroes.

There is a PDF provided that you can print and cut for the character names. I suggest printing these on sticker paper.

Optimizing the fit

The default files intentionally fit the minis with a very light friction fit (using a 0.6mm offset) in the tapered miniature slot. If you would like a

looser fit, or if you find the original files too tight you can use the files with the “-medium” (0.8mm offset) or “-loose” (1.0mm offset) filename suffix .

If you're unsure of which one to use, I suggest printing out the 55x1 for each of the fits(original, medium and loose) and using those to determine which you prefer.

My printer settings

Printer: Prusa Mini+

Filament: Polymaker Polyterra PLA

Layer height: 0.2mm

No supports required

Recommend orienting the print so that the “back” is on the build plate

Model files



character-name-plate-v2.3mf



character-tray-55x1.3mf



token-tray1-short.3mf



character-tray-45x3.3mf



character-tray-56x3.3mf



character-tray-40x4.3mf



token-tray2-long.3mf



token-tray2-short.3mf



character-tray-45x4.3mf



character-tray-40x3.3mf



token-tray1-long.3mf



character-tray-65x4.3mf



character-tray-56x4.3mf



character-tray-65x3.3mf



character-name-plate-v2-loose.3mf



character-tray-55x1-loose.3mf



character-tray-40x3-loose.3mf



character-tray-45x4-loose.3mf



character-tray-56x4-loose.3mf



character-tray-40x4-loose.3mf



character-tray-45x3-loose.3mf



character-tray-56x3-loose.3mf



character-tray-65x3-loose.3mf



character-tray-65x4-loose.3mf



character-name-plate-v2-medium.3mf



character-tray-56x3-medium.3mf



character-tray-45x4-medium.3mf



character-tray-55x1-medium.3mf



character-tray-45x3-medium.3mf



character-tray-56x4-medium.3mf



character-tray-65x3-medium.3mf



character-tray-40x3-medium.3mf



character-tray-40x4-medium.3mf



character-tray-65x4-medium.3mf



character-tray-79x1-loose.3mf

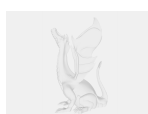


character-tray-79x1-medium.3mf



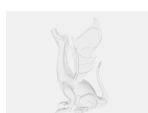
character-tray-79x1.3mf

Other files



character-nameplate-labels-season1.pdf

☐ Printable labels for the character name plates



character-nameplate-labels-season2.pdf

License

This work is licensed under a
Creative Commons (4.0 International License)



Attribution-NonCommercial

-
- ✗ | Sharing without ATTRIBUTION
 - ✓ | Remix Culture allowed
 - ✗ | Commercial Use
 - ✗ | Free Cultural Works
 - ✗ | Meets Open Definition